

For Research Use Only

SETD5 Polyclonal antibody, PBS Only

Catalog Number: 28434-1-PBS



Basic Information

Catalog Number:

28434-1-PBS

Size:

100ug, Concentration: 1 mg/ml by Nanodrop;

Source:

Rabbit

Isotype:

IgG

Immunogen Catalog Number:

AG28920

GenBank Accession Number:

BC020956

GeneID (NCBI):

55209

UNIPROT ID:

Q9C0A6

Full Name:

SET domain containing 5

Observed MW:

160-220 kDa

Purification Method:

Antigen affinity purification

Applications

Tested Applications:

WB, IP, Indirect ELISA

Species Specificity:

human

Background Information

SETD5, also known as KIAA1757, is a member of the histone lysine methyltransferase family. It has 3 isoforms and is involved in a variety of cellular functions, including cell cycle regulation and cell proliferation, and has a potential role in early embryonic development (PMID: 36875494).

Storage

Storage:

Store at -80°C.

Storage Buffer:

PBS Only

For technical support and original validation data for this product please contact:

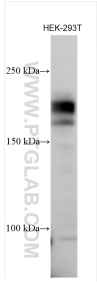
T: 1 (888) 4PTGLAB (1-888-478-4522) (toll free in USA), or 1(312) 455-8498 (outside USA)

E: proteintech@ptglab.com

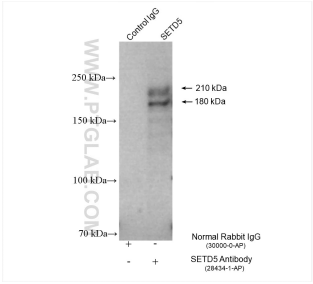
W: ptglab.com

This product is exclusively available under Proteintech Group brand and is not available to purchase from any other manufacturer.

Selected Validation Data



HEK-293T cells were subjected to SDS PAGE followed by western blot with 28434-1-AP (SETD5 antibody) at dilution of 1:2000 incubated at room temperature for 1.5 hours. This data was developed using the same antibody clone with 28434-1-PBS in a different storage buffer formulation.



IP result of anti-SETD5 (IP:28434-1-AP, 4ug; Detection:28434-1-AP 1:600) with BxPC-3 cells lysate 2360 ug. This data was developed using the same antibody clone with 28434-1-PBS in a different storage buffer formulation.