

For Research Use Only

# KMT2C Polyclonal antibody

Catalog Number: 28437-1-AP

4 Publications



## Basic Information

Catalog Number:

28437-1-AP

Size:

150ul, Concentration: 650 ug/ml by Nanodrop;

Source:

Rabbit

Isotype:

IgG

Immunogen Catalog Number:

AG28875

GenBank Accession Number:

NM\_170606

GeneID (NCBI):

58508

UNIPROT ID:

Q8NEZ4

Full Name:

myeloid/lymphoid or mixed-lineage leukemia 3

Calculated MW:

541 kDa

Observed MW:

541kDa, 269 kDa

Purification Method:

Antigen affinity purification

Recommended Dilutions:

WB 1:500-1:1000

IHC 1:200-1:800

## Applications

Tested Applications:

WB, IHC, ELISA

Cited Applications:

WB, IF, ColP, ChIP

Species Specificity:

human

Cited Species:

human

Positive Controls:

WB : K-562 cells,

IHC : human ovary cancer tissue,

**Note-IHC: suggested antigen retrieval with TE buffer pH 9.0; (\*) Alternatively, antigen retrieval may be performed with citrate buffer pH 6.0**

## Background Information

Lysine (K)-specific methyltransferase 2C (KMT2C, also known as MLL3) belongs to the mixed-lineage leukemia (MLL) family of histone methyltransferases which methylate the histone 3 tail at lysine 4 (H3K4) as part of the complex proteins associated with Set 1 (COMPASS) complex. Although originally identified as oncogenic fusions in leukemia, genome-wide mutation studies have revealed frequent, presumably loss-of-function, mutations in various members of the MLL family, including MLL2/KMT2B, MLL3/KMT2C, and MLL4/KMT2D in a variety of malignancies, particularly solid tumors. Mechanistic studies of KMT2C in normal cells have focused primarily on its role in enhancer regulation by deposition of H3K4me1 marks.

## Notable Publications

| Author        | Pubmed ID | Journal             | Application |
|---------------|-----------|---------------------|-------------|
| Juan-Juan Li  | 34999393  | Int Immunopharmacol | WB          |
| Tian Tian     | 38649452  | Nat Chem Biol       | WB          |
| Mingchuan Sun | 37705061  | Adv Sci (Weinh)     | WB,IF,ColP  |

## Storage

Storage:

Store at -20°C. Stable for one year after shipment.

Storage Buffer:

PBS with 0.02% sodium azide and 50% glycerol pH 7.3.

Aliquoting is unnecessary for -20°C storage

\*\*\* 20ul sizes contain 0.1% BSA

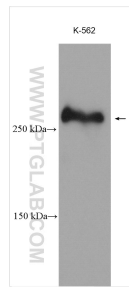
For technical support and original validation data for this product please contact:

T: 1 (888) 4PTGLAB (1-888-478-4522) (toll free in USA), or 1(312) 455-8498 (outside USA)

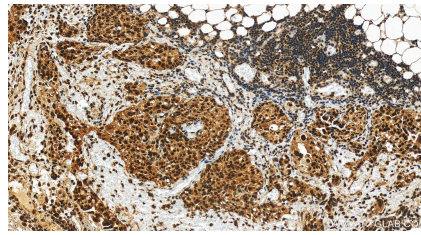
E: [proteintech@ptglab.com](mailto:proteintech@ptglab.com)  
W: [ptglab.com](http://ptglab.com)

This product is exclusively available under Proteintech Group brand and is not available to purchase from any other manufacturer.

## Selected Validation Data



K-562 cells were subjected to SDS PAGE followed by western blot with 28437-1-AP (KMT2C antibody) at dilution of 1:500 incubated at room temperature for 1.5 hours.



Immunohistochemical analysis of paraffin-embedded human ovary cancer tissue slide using 28437-1-AP (KMT2C antibody) at dilution of 1:400 (under 20x lens). Heat mediated antigen retrieval with Tris-EDTA buffer (pH 9.0).