

For Research Use Only

HPF1 Polyclonal antibody

Catalog Number: 28456-1-AP



Basic Information

| | | |
|---|---|--|
| Catalog Number: 28456-1-AP | GenBank Accession Number: BC010367 | Purification Method: Antigen affinity purification |
| Size: 150ul , Concentration: 450 ug/ml by Nanodrop; | GeneID (NCBI): 54969 | Recommended Dilutions: WB 1:2000-1:12000 IF/ICC 1:200-1:800 |
| Source: Rabbit | UNIPROT ID: Q9NWY4 | |
| Isotype: IgG | Full Name: chromosome 4 open reading frame 27 | |
| Immunogen Catalog Number: AG29377 | Calculated MW: 346 aa, 39 kDa | |
| | Observed MW: 39 kDa | |

Applications

| | |
|--|---|
| Tested Applications: WB, IF/ICC, ELISA | Positive Controls: |
| Species Specificity: human | WB : Jurkat cells, MOLT-4 cells IF/ICC : A431 cells, |

Background Information

HPF1 is also known as C4orf27 and belongs to the HPF1 family. HPF1 is a novel interacting component of PARP1 complex that plays an important role in PARP1-dependent ADP-ribosylation signaling in the DNA damage response and the maintenance of genome stability (PMID: 29549427). The calculated molecular weight of HPF1 is 39 kDa.

Storage

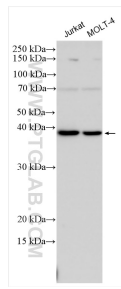
Storage:
Store at -20°C. Stable for one year after shipment.
Storage Buffer:
PBS with 0.02% sodium azide and 50% glycerol pH 7.3.
Aliquoting is unnecessary for -20°C storage

*** 20ul sizes contain 0.1% BSA

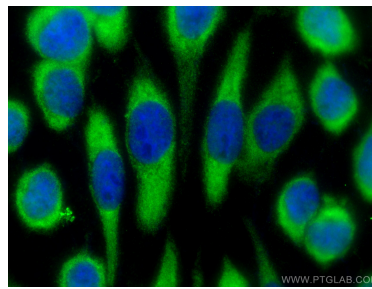
For technical support and original validation data for this product please contact:
T: 1 (888) 4PTGLAB (1-888-478-4522) (toll free in USA), or 1(312) 455-8498 (outside USA)
E: proteintech@ptglab.com
W: ptglab.com

This product is exclusively available under Proteintech Group brand and is not available to purchase from any other manufacturer.

Selected Validation Data



Various lysates were subjected to SDS PAGE followed by western blot with 28456-1-AP (HPF1 antibody) at dilution of 1:6000 incubated at room temperature for 1.5 hours.



Immunofluorescent analysis of (-20°C Methanol) fixed A431 cells using HPF1 antibody (28456-1-AP) at dilution of 1:400 and CoraLite® 488-Conjugated AffiniPure Goat Anti-Rabbit IgG(H+L) (SA00013-2).