

For Research Use Only

Collagen Type II Polyclonal antibody

Catalog Number: 28459-1-AP

296 Publications



Basic Information

Catalog Number: 28459-1-AP	GenBank Accession Number: BC007252	Purification Method: Antigen affinity purification
Size: 150ul , Concentration: 900 ug/ml by Nanodrop;	GeneID (NCBI): 1280	Recommended Dilutions: IHC 1:800-1:3200
Source: Rabbit	UNIPROT ID: P02458	IF-P 1:50-1:500
Isotype: IgG	Full Name: collagen, type II, alpha 1	IF/ICC 1:50-1:500
Immunogen Catalog Number: AG29265	Calculated MW: 134 kDa	

Applications

Tested Applications: IHC, IF/ICC, IF-P, ELISA	Positive Controls:
Cited Applications: WB, IHC, IF, ColP	IHC : human lung tissue,
Species Specificity: human	IF-P : human lung cancer tissue,
Cited Species: human, mouse, rat, pig, rabbit	IF/ICC : ATDC-5 cells,
Note-IHC: suggested antigen retrieval with TE buffer pH 9.0; (*) Alternatively, antigen retrieval may be performed with citrate buffer pH 6.0	

Background Information

The COL2A1 gene encodes the alpha-1 chain of type II collagen, a fibrillar collagen found primarily in cartilage and the vitreous humor of the eye. Type II collagen is essential for the formation of the extracellular matrix in cartilage and other connective tissues, providing structure and strength to these tissues .

Notable Publications

Author	Pubmed ID	Journal	Application
Jinghong Zhong	36177510	J Biochem Mol Toxicol	IF
Wang Changchen	34563726	Acta Biomater	IHC
JIANXIONG WU	34549304	Mol Med Rep	IF

Storage

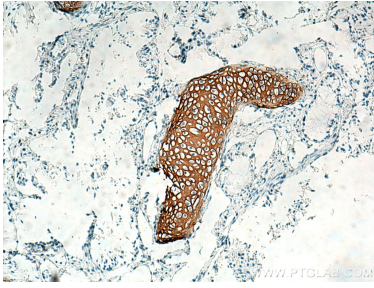
Storage:
Store at -20°C. Stable for one year after shipment.
Storage Buffer:
PBS with 0.02% sodium azide and 50% glycerol, pH7.3
Aliquoting is unnecessary for -20°C storage

*** 20ul sizes contain 0.1% BSA

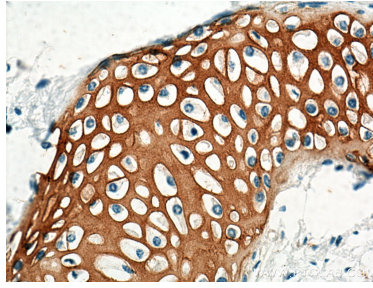
For technical support and original validation data for this product please contact:
T: 1 (888) 4PTGLAB (1-888-478-4522) (toll free in USA), or 1(312) 455-8498 (outside USA)
E: proteintech@ptglab.com
W: ptglab.com

This product is exclusively available under Proteintech Group brand and is not available to purchase from any other manufacturer.

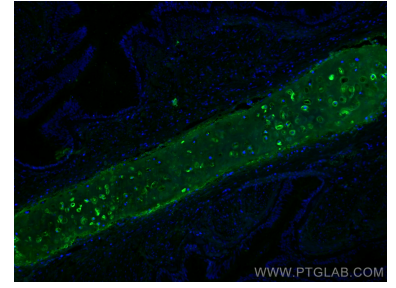
Selected Validation Data



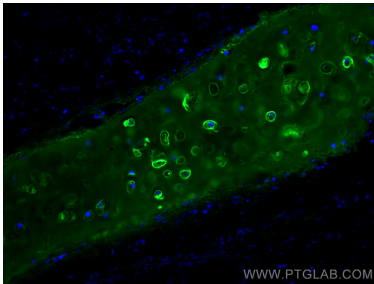
Immunohistochemical analysis of paraffin-embedded human lung tissue slide using 28459-1-AP (Collagen Type II antibody) at dilution of 1:1600 (under 10x lens). Heat mediated antigen retrieval with Tris-EDTA buffer (pH 9.0).



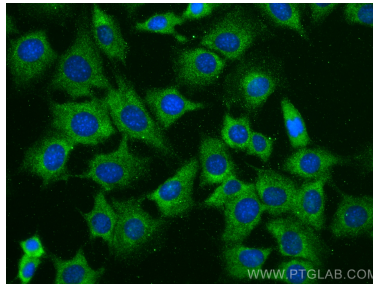
Immunohistochemical analysis of paraffin-embedded human lung tissue slide using 28459-1-AP (Collagen Type II antibody) at dilution of 1:1600 (under 40x lens). Heat mediated antigen retrieval with Tris-EDTA buffer (pH 9.0).



Immunofluorescent analysis of (4% PFA) fixed human lung cancer tissue using Collagen Type II antibody (28459-1-AP) at dilution of 1:200 and CoraLite®488-Conjugated AffiniPure Goat Anti-Rabbit IgG(H+L).



Immunofluorescent analysis of (4% PFA) fixed human lung cancer tissue using Collagen Type II antibody (28459-1-AP) at dilution of 1:200 and CoraLite®488-Conjugated AffiniPure Goat Anti-Rabbit IgG(H+L).



Immunofluorescent analysis of (-20°C Ethanol) fixed ATDC-5 cells using Collagen Type II antibody (28459-1-AP) at dilution of 1:200 and CoraLite®488-Conjugated Goat Anti-Rabbit IgG(H+L) (SA00013-2).