

For Research Use Only

# Involucrin Polyclonal antibody

Catalog Number: 28462-1-AP

9 Publications



## Basic Information

<b>Catalog Number:</b> 28462-1-AP	<b>GenBank Accession Number:</b> NM_005547	<b>Purification Method:</b> Antigen affinity purification
<b>Size:</b> 150ul , Concentration: 450 ug/ml by Nanodrop;	<b>GeneID (NCBI):</b> 3713	<b>Recommended Dilutions:</b> WB 1:1000-1:4000
<b>Source:</b> Rabbit	<b>UNIPROT ID:</b> P07476	<b>IHC 1:200-1:1000</b>
<b>Isotype:</b> IgG	<b>Full Name:</b> involucrin	<b>IF/ICC 1:50-1:500</b>
<b>Immunogen Catalog Number:</b> AG29585	<b>Calculated MW:</b> 68 kDa	
	<b>Observed MW:</b> 120 kDa	

## Applications

<b>Tested Applications:</b> WB, IHC, IF/ICC, FC (Intra), ELISA	<b>Positive Controls:</b> WB : A431 cells, HT-1080 cells, HT-29 cells
<b>Cited Applications:</b> WB, IHC, IF	<b>IHC :</b> human tonsillitis tissue, human brown disease, human oesophagus cancer tissue, human skin cancer tissue
<b>Species Specificity:</b> human	<b>IF/ICC :</b> A431 cells,
<b>Cited Species:</b> human	
<b>Note-IHC: suggested antigen retrieval with TE buffer pH 9.0; (*) Alternatively, antigen retrieval may be performed with citrate buffer pH 6.0</b>	

## Background Information

Involucrin is a protein precursor of the epidermal cornified envelope that is assembled in the outermost layers of the epidermis. Involucrin expression is restricted to the suprabasal epidermal layers (spinous and granular layers) during normal keratinocyte differentiation and is a useful marker of terminal differentiation. The predicted MW of involucrin is 68 kDa, but it also forms 120 kDa dimers, while different reports provided variable results ranging from 90-140 kDa. (PMID: 11099111, 1503502, 12150517)

## Notable Publications

Author	Pubmed ID	Journal	Application
Zhenzhuo Li	34562563	J Ethnopharmacol	WB,IHC
Yushi Katsuyama	36047208	Biol Pharm Bull	WB
Jie-Fang Gao	35533554	Int Immunopharmacol	IF

## Storage

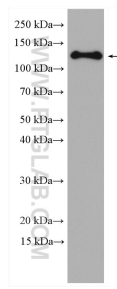
**Storage:**  
Store at -20°C. Stable for one year after shipment.  
**Storage Buffer:**  
PBS with 0.02% sodium azide and 50% glycerol pH 7.3.  
Aliquoting is unnecessary for -20°C storage

\*\*\* 20ul sizes contain 0.1% BSA

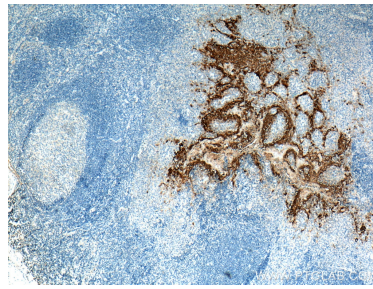
For technical support and original validation data for this product please contact:  
T: 1 (888) 4PTGLAB (1-888-478-4522) (toll free in USA), or 1(312) 455-8498 (outside USA)  
E: [proteintech@ptglab.com](mailto:proteintech@ptglab.com)  
W: [ptglab.com](http://ptglab.com)

This product is exclusively available under Proteintech Group brand and is not available to purchase from any other manufacturer.

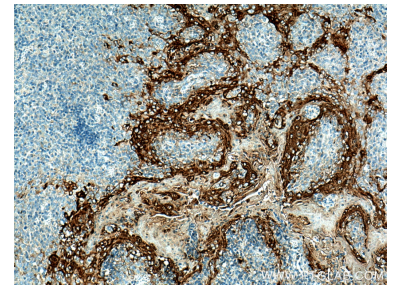
## Selected Validation Data



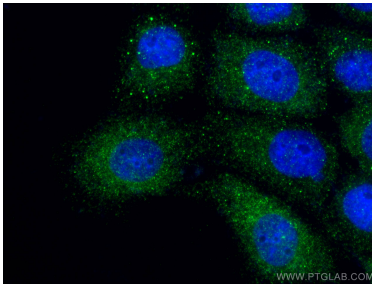
A431 cells were subjected to SDS PAGE followed by western blot with 28462-1-AP (Involucrin antibody) at dilution of 1:2000 incubated at room temperature for 1.5 hours.



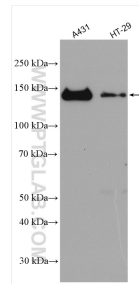
Immunohistochemical analysis of paraffin-embedded human tonsillitis tissue slide using 28462-1-AP (Involucrin antibody) at dilution of 1:200 (under 4x lens). Heat mediated antigen retrieval with Tris-EDTA buffer (pH 9.0).



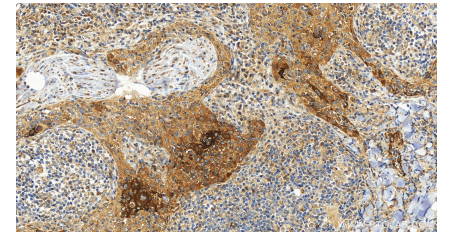
Immunohistochemical analysis of paraffin-embedded human tonsillitis tissue slide using 28462-1-AP (Involucrin antibody) at dilution of 1:200 (under 10x lens). Heat mediated antigen retrieval with Tris-EDTA buffer (pH 9.0).



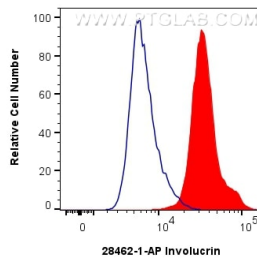
Immunofluorescent analysis of (4% PFA) fixed A431 cells using Involucrin antibody (28462-1-AP) at dilution of 1:200 and CoraLite®488-Conjugated AffiniPure Goat Anti-Rabbit IgG(H+L).



Various lysates were subjected to SDS PAGE followed by western blot with 28462-1-AP (Involucrin antibody) at dilution of 1:10000 incubated at room temperature for 1.5 hours.



Immunohistochemical analysis of paraffin-embedded human skin cancer tissue slide using 28462-1-AP (Involucrin antibody) at dilution of 1:1000 (under 20x lens). Heat mediated antigen retrieval with Tris-EDTA buffer (pH 9.0).



$1 \times 10^6$  A431 cells were intracellularly stained with 0.4 ug Involucrin Polyclonal antibody (28462-1-AP) and CoraLite®488-Conjugated AffiniPure Goat Anti-Rabbit IgG(H+L) (SA00013-2)(red), or 0.4 ug Rabbit IgG control Rabbit PolyAb (30000-O-AP) (blue). Cells were fixed with 4% PFA and permeabilized with Flow Cytometry Perm Buffer (PF00011-C).