

For Research Use Only

PHF17 Polyclonal antibody

Catalog Number: 28472-1-AP

Featured Product



Basic Information

Catalog Number:

28472-1-AP

Size:

150ul, Concentration: 800 ug/ml by Nanodrop;

Source:

Rabbit

Isotype:

IgG

Immunogen Catalog Number:

AG29675

GenBank Accession Number:

BC032376

GeneID (NCBI):

79960

UNIPROT ID:

Q6IE81

Full Name:

PHD finger protein 17

Calculated MW:

96 kDa

Observed MW:

65, 100-110 kDa

Purification Method:

Antigen affinity purification

Recommended Dilutions:

WB 1:1000-1:5000

IF/ICC 1:50-1:500

Applications

Tested Applications:

WB, IF/ICC, ELISA

Species Specificity:

Human

Positive Controls:

WB : Jurkat cells, HepG2 cells, A549 cells, MCF-7 cells

IF/ICC : HeLa cells,

Background Information

PHF17, also named as JADE1 and KIAA1807, belongs to the JADE family. PHF17 codes for the Jade-1 protein. This protein interacts with histone acetyltransferase HBO1 and promotes histone acetylation in chromatin to regulate DNA replication and gene transcription. PHF17 is mostly expressed in the small intestine, prostate, mammary gland and kidney. PHF17 is involved in mitosis, meiosis and tumor suppression (PMID: 28134766). PHF17 has 3 isoforms with the molecular mass of 58 and 94-96 kDa. With modification, the MW of PHF17 may be migrated to about 65 and 100-110 kDa.

Storage

Storage:

Store at -20°C. Stable for one year after shipment.

Storage Buffer:

PBS with 0.02% sodium azide and 50% glycerol pH 7.3.

Aliquoting is unnecessary for -20°C storage

*** 20ul sizes contain 0.1% BSA

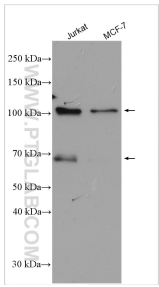
For technical support and original validation data for this product please contact:

T: 1 (888) 4PTGLAB (1-888-478-4522) (toll free in USA), or 1(312) 455-8498 (outside USA)

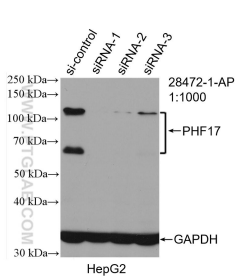
E: proteintech@ptglab.com
W: ptglab.com

This product is exclusively available under Proteintech Group brand and is not available to purchase from any other manufacturer.

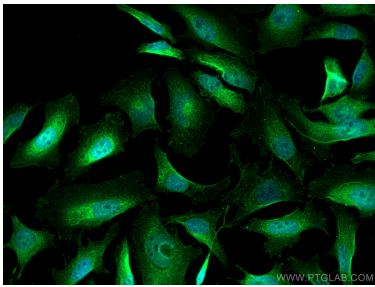
Selected Validation Data



Various lysates were subjected to SDS PAGE followed by western blot with 28472-1-AP (PHF 17 antibody) at dilution of 1:2500 incubated at room temperature for 1.5 hours.



WB result of PHF 17 antibody (28472-1-AP; 1:1000; incubated at room temperature for 1.5 hours) with sh-Control and sh-PHF 17 transfected HepG2 cells.



Immunofluorescent analysis of (4% PFA) fixed HeLa cells using PHF 17 antibody (28472-1-AP) at dilution of 1:200 and CoraLite®488-Conjugated AffiniPure Goat Anti-Rabbit IgG(H+L).