

For Research Use Only

# Filamin-C Polyclonal antibody

Catalog Number: 28492-1-AP

1 Publications



## Basic Information

<b>Catalog Number:</b> 28492-1-AP	<b>GenBank Accession Number:</b> NM_001458	<b>Purification Method:</b> Antigen affinity purification
<b>Size:</b> 150ul , Concentration: 300 ug/ml by Nanodrop;	<b>GeneID (NCBI):</b> 2318	<b>Recommended Dilutions:</b> WB 1:500-1:2000 IHC 1:50-1:500
<b>Source:</b> Rabbit	<b>UNIPROT ID:</b> Q14315	
<b>Isotype:</b> IgG	<b>Full Name:</b> filamin C, gamma (actin binding protein 280)	
<b>Immunogen Catalog Number:</b> AG29328	<b>Calculated MW:</b> 291 kDa	
	<b>Observed MW:</b> 280-300 kDa	

## Applications

<b>Tested Applications:</b> WB, IHC, ELISA	<b>Positive Controls:</b>
<b>Cited Applications:</b> WB	<b>WB :</b> SGC-7901 cells,
<b>Species Specificity:</b> human	<b>IHC :</b> human colon,
<b>Cited Species:</b> human	

**Note-IHC: suggested antigen retrieval with TE buffer pH 9.0; (\*) Alternatively, antigen retrieval may be performed with citrate buffer pH 6.0**

## Background Information

Filamin C (FLNC; also known as  $\gamma$ -FLN; ABP-L; FLN2), a muscle-specific filamin and a large actin-cross-linking protein. Human filamins are ~280 kDa homodimers, each monomer consisting of an N-terminal actin-binding domain followed by 24 immunoglobulin (Ig)-like domains (d1 to d24), the last of which mediates dimerization. FLNC is specifically expressed in cardiomyocytes and skeletal myocytes and is involved in the maintenance of structural integrity. High filamin C associated with better prognosis of prostate cancer, leukemia and breast cancer patients. ( PMID: 25577646, PMID: 30867563, PMID: 31131323)

## Notable Publications

Author	Pubmed ID	Journal	Application
Ilenia Matera	38003580	Int J Mol Sci	WB

## Storage

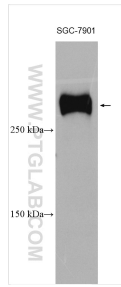
**Storage:**  
Store at -20°C. Stable for one year after shipment.  
**Storage Buffer:**  
PBS with 0.02% sodium azide and 50% glycerol pH 7.3.  
**Aliquoting is unnecessary for -20°C storage**

\*\*\* 20ul sizes contain 0.1% BSA

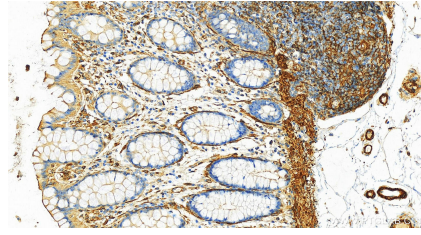
For technical support and original validation data for this product please contact:  
T: 1 (888) 4PTGLAB (1-888-478-4522) (toll free in USA), or 1(312) 455-8498 (outside USA)  
E: [proteintech@ptglab.com](mailto:proteintech@ptglab.com)  
W: [ptglab.com](http://ptglab.com)

This product is exclusively available under Proteintech Group brand and is not available to purchase from any other manufacturer.

## Selected Validation Data



SGC-7901 cells were subjected to SDS PAGE followed by western blot with 28492-1-AP (filamin-c antibody) at dilution of 1:1000 incubated at room temperature for 1.5 hours.



Immunohistochemical analysis of paraffin-embedded human colon slide using 28492-1-AP (FLNC antibody) at dilution of 1:200 (under 20x lens). Heat mediated antigen retrieval with Tris-EDTA buffer (pH 9.0).