

For Research Use Only

ROS1 Polyclonal antibody

Catalog Number: 28500-1-AP

Featured Product



Basic Information

Catalog Number:

28500-1-AP

Size:

150ul, Concentration: 350 µg/ml by Nanodrop;

Source:

Rabbit

Isotype:

IgG

Immunogen Catalog Number:

AG28943

GenBank Accession Number:

NM_002944

GeneID (NCBI):

6098

UNIPROT ID:

P08922

Full Name:

c-ros oncogene 1, receptor tyrosine kinase

Calculated MW:

264 kDa

Observed MW:

250 kDa

Purification Method:

Antigen affinity purification

Recommended Dilutions:

WB 1:500-1:2000

Applications

Tested Applications:

WB, ELISA

Species Specificity:

Human

Positive Controls:

WB: HeLa cells,

Background Information

ROS1, an orphan receptor tyrosine kinase of the insulin receptor family, was initially identified as a homolog of v-ros from the UR2 sarcoma virus (PMID: 3023956). It's reported that rearrangements of the ROS1 gene occur in many cancers. The first oncogenic fusion of ROS1, FIG-ROS1, was initially identified by research studies in glioblastoma (PMID: 12661006), and subsequent studies have found this fusion in cholangiocarcinoma, ovarian cancer and non-small cell lung cancer (NSCLC) (PMID: 21253578, 22163003, 22661537). Additional oncogenic ROS1 fusion proteins have been found in NSCLC (at a frequency of 1-2%), including FIG, CD74, SLC34A2 and SDC4, and the list is growing. CD74-ROS1 is the most frequently detected ROS1 fusion in this group of patients. With all of the known fusion genes, the ROS1 kinase domain is fully retained and the ROS1 junction point at the messenger RNA (mRNA) level invariably occurs at the 5' end of exons 32, 34, 35 or 36 (PMID: 27535289). The molecular mass of some ROS1 fusion proteins are detected as follows: FIG-ROS1 (110 kDa), SLC34A2-ROS1 (85/70/59 kDa), CD74-ROS1 (80 kDa), and SDC4-ROS1 (75 kDa). (PMID: 22661537, 22659450)

Storage

Storage:

Store at -20°C. Stable for one year after shipment.

Storage Buffer:

PBS with 0.02% sodium azide and 50% glycerol pH 7.3.

Aliquoting is unnecessary for -20°C storage

*** 20ul sizes contain 0.1% BSA

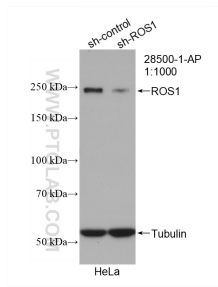
For technical support and original validation data for this product please contact:

T: 1 (888) 4PTGLAB (1-888-478-4522) (toll free in USA), or 1(312) 455-8498 (outside USA)

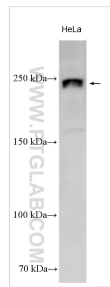
E: proteintech@ptglab.com
W: ptglab.com

This product is exclusively available under Proteintech Group brand and is not available to purchase from any other manufacturer.

Selected Validation Data



WB result of ROS1 antibody (28500-1-AP; 1:1000; incubated at room temperature for 1.5 hours) with sh-Control and sh-ROS1 transfected HeLa cells.



HeLa lysates were subjected to SDS PAGE followed by western blot with 28500-1-AP (ROS1 antibody) at dilution of 1:1000 incubated at room temperature for 1.5 hours.