

For Research Use Only

GCH1 Polyclonal antibody

Catalog Number: 28501-1-AP

Featured Product

9 Publications



Basic Information

Catalog Number:

28501-1-AP

Size:

150ul, Concentration: 650 ug/ml by Nanodrop;

Source:

Rabbit

Isotype:

IgG

Immunogen Catalog Number:

AG28896

GenBank Accession Number:

BC025415

GeneID (NCBI):

2643

UNIPROT ID:

P30793

Full Name:

GTP cyclohydrolase 1

Calculated MW:

28 kDa

Observed MW:

30-35 kDa

Purification Method:

Antigen affinity purification

Recommended Dilutions:

WB 1:1000-1:6000

IHC 1:200-1:800

Applications

Tested Applications:

WB, IHC, ELISA

Cited Applications:

WB, IF

Species Specificity:

Human, mouse, rat

Cited Species:

human, mouse

Note-IHC: suggested antigen retrieval with *TE buffer pH 9.0*; (*) Alternatively, antigen retrieval may be performed with *citrate buffer pH 6.0*

Positive Controls:

WB : HEK-293 cells, mouse liver tissue, rat liver tissue

IHC : rat liver tissue, mouse liver tissue

Notable Publications

| Author | Pubmed ID | Journal | Application |
|---------------|-----------|---------------------------|-------------|
| Jiujian Zheng | 36196723 | Eur Rev Med Pharmacol Sci | WB |
| Dong Liu | 36627132 | Adv Sci (Weinh) | WB |
| Tanxiu Chen | 36572150 | Virol Sin | WB,IF |

Storage

Storage:

Store at -20°C. Stable for one year after shipment.

Storage Buffer:

PBS with 0.02% sodium azide and 50% glycerol

Aliquoting is unnecessary for -20°C storage

***** 20ul sizes contain 0.1%BSA**

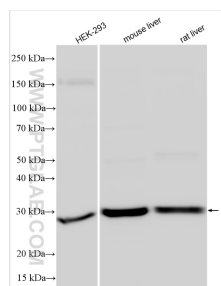
For technical support and original validation data for this product please contact:

T: 1 (888) 4PTGLAB (1-888-478-4522) (toll free in USA), or 1(312) 455-8498 (outside USA)

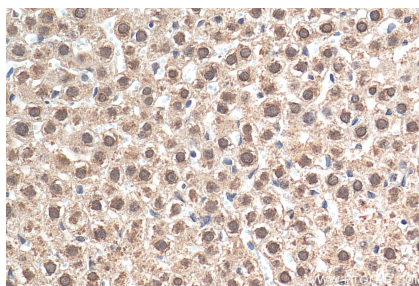
E: proteintech@ptglab.com
W: ptglab.com

This product is exclusively available under Proteintech Group brand and is not available to purchase from any other manufacturer.

Selected Validation Data



Various lysates were subjected to SDS PAGE followed by western blot with 28501-1-AP (GCH1 antibody) at dilution of 1:3000 incubated at room temperature for 1.5 hours.



Immunohistochemical analysis of paraffin-embedded rat liver tissue slide using 28501-1-AP (GCH1 antibody) at dilution of 1:400 (under 40x lens). Heat mediated antigen retrieval with Tris-EDTA buffer (pH 9.0).