

For Research Use Only

# APOOL Polyclonal antibody

Catalog Number: 28514-1-AP



## Basic Information

<b>Catalog Number:</b> 28514-1-AP	<b>GenBank Accession Number:</b> BC107096	<b>Purification Method:</b> Antigen affinity purification
<b>Size:</b> 150ul , Concentration: 300 ug/ml by Nanodrop;	<b>GeneID (NCBI):</b> 139322	<b>Recommended Dilutions:</b> WB 1:1000-1:6000
<b>Source:</b> Rabbit	<b>UNIPROT ID:</b> Q6UXV4	<b>IHC 1:150-1:600</b>
<b>Isotype:</b> IgG	<b>Full Name:</b> apolipoprotein O-like	<b>IF/ICC 1:200-1:800</b>
<b>Immunogen Catalog Number:</b> AG29392	<b>Calculated MW:</b> 268 aa, 29 kDa	
	<b>Observed MW:</b> 30 kDa	

## Applications

<b>Tested Applications:</b> WB, IHC, IF/ICC, ELISA	<b>Positive Controls:</b>
<b>Species Specificity:</b> Human, Mouse, Rat	<b>WB :</b> HeLa cells, LNCaP cells, HepG2 cells, mouse heart tissue, rat heart tissue
<b>Note-IHC: suggested antigen retrieval with TE buffer pH 9.0; (*) Alternatively, antigen retrieval may be performed with citrate buffer pH 6.0</b>	<b>IHC :</b> human kidney tissue, human placenta tissue
	<b>IF/ICC :</b> HeLa cells,

## Background Information

APOOL, the component of the MICOS complex, is a large protein complex of the mitochondrial inner membrane that plays crucial roles in the maintenance of crista junctions, inner membrane architecture, and formation of contact sites to the outer membrane. Specifically binds to cardiolipin (in vitro) but not to the precursor lipid phosphatidylglycerol. Plays a crucial role in crista junction formation and mitochondrial function (PubMed:23704930), (PubMed:25764979). Its molecular weight is about 30 kDa.

## Storage

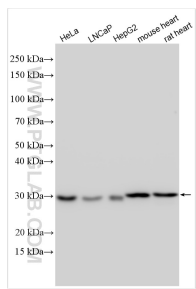
**Storage:**  
Store at -20°C. Stable for one year after shipment.  
**Storage Buffer:**  
PBS with 0.02% sodium azide and 50% glycerol pH 7.3.  
**Aliquoting is unnecessary for -20°C storage**

\*\*\* 20ul sizes contain 0.1% BSA

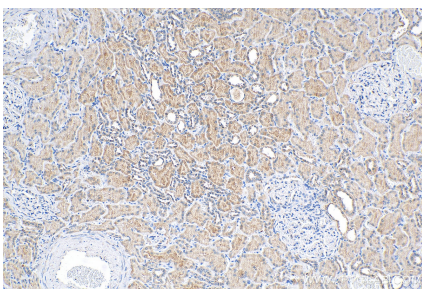
For technical support and original validation data for this product please contact:  
T: 1 (888) 4PTGLAB (1-888-478-4522) (toll free in USA), or 1(312) 455-8498 (outside USA)  
E: [proteintech@ptglab.com](mailto:proteintech@ptglab.com)  
W: [ptglab.com](http://ptglab.com)

This product is exclusively available under Proteintech Group brand and is not available to purchase from any other manufacturer.

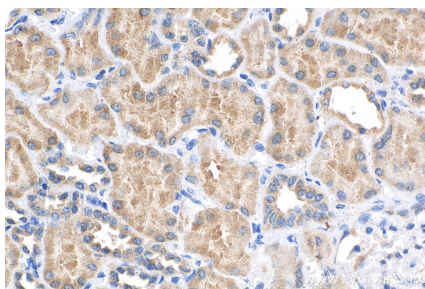
Selected Validation Data



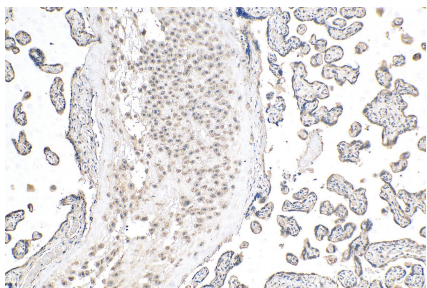
Various lysates were subjected to SDS PAGE followed by western blot with 28514-1-AP (APOOL antibody) at dilution of 1:3000 incubated at room temperature for 1.5 hours.



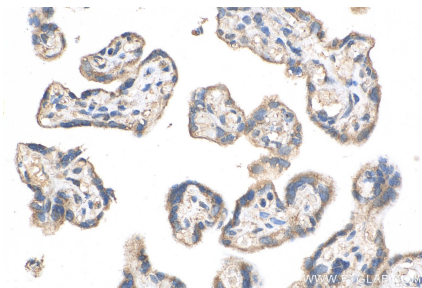
Immunohistochemical analysis of paraffin-embedded human kidney tissue slide using 28514-1-AP (APOOL antibody) at dilution of 1:300 (under 10x lens). Heat mediated antigen retrieval with Tris-EDTA buffer (pH 9.0).



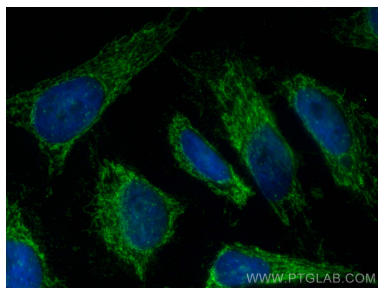
Immunohistochemical analysis of paraffin-embedded human kidney tissue slide using 28514-1-AP (APOOL antibody) at dilution of 1:300 (under 40x lens). Heat mediated antigen retrieval with Tris-EDTA buffer (pH 9.0).



Immunohistochemical analysis of paraffin-embedded human placenta tissue slide using 28514-1-AP (APOOL antibody) at dilution of 1:300 (under 10x lens). Heat mediated antigen retrieval with Tris-EDTA buffer (pH 9.0).



Immunohistochemical analysis of paraffin-embedded human placenta tissue slide using 28514-1-AP (APOOL antibody) at dilution of 1:300 (under 40x lens). Heat mediated antigen retrieval with Tris-EDTA buffer (pH 9.0).



Immunofluorescent analysis of (4% PFA) fixed HeLa cells using APOOL antibody (28514-1-AP) at dilution of 1:400 and CoraLite®488-Conjugated Goat Anti-Rabbit IgG(H+L).