

For Research Use Only

GABRA2 Polyclonal antibody

Catalog Number: 28535-1-AP



Basic Information

Catalog Number:

28535-1-AP

Size:

150ul , Concentration: 600 ug/ml by Nanodrop;

Source:

Rabbit

Isotype:

IgG

Immunogen Catalog Number:

AG29301

GenBank Accession Number:

NM_000807

GeneID (NCBI):

2555

UNIPROT ID:

P47869

Full Name:

gamma-aminobutyric acid (GABA) A receptor, alpha 2

Calculated MW:

51 kDa

Observed MW:

51 kDa

Purification Method:

Antigen affinity purification

Recommended Dilutions:

WB 1:500-1:2000

Applications

Tested Applications:

WB, ELISA

Species Specificity:

human, rat

Positive Controls:

WB : rat brain tissue,

Background Information

GABRA2 (gamma-aminobutyric acid type A receptor subunit alpha2), also known as DEE78. It is expected to be located in cell membrane, and the protein is highly expressed in brain. The protein is a ligand-gated chloride channel, which is a component of the heteropentameric receptor for GABA, the major inhibitory neurotransmitter in the brain (PubMed:29961870). It also plays an important role in the formation of functional inhibitory GABAergic synapses in addition to mediating synaptic inhibition as a GABA-gated ion channel (PubMed:29961870). The calculated molecular weight of GABRA2 is 51 kDa.

Storage

Storage:

Store at -20°C. Stable for one year after shipment.

Storage Buffer:

PBS with 0.02% sodium azide and 50% glycerol pH 7.3.

Aliquoting is unnecessary for -20°C storage

*** 20ul sizes contain 0.1% BSA

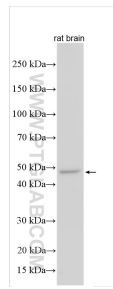
For technical support and original validation data for this product please contact:

T: 1 (888) 4PTGLAB (1-888-478-4522) (toll free in USA), or 1(312) 455-8498 (outside USA)

E: proteintech@ptglab.com
W: ptglab.com

This product is exclusively available under Proteintech Group brand and is not available to purchase from any other manufacturer.

Selected Validation Data



Various lysates were subjected to SDS PAGE followed by western blot with 28535-1-AP (GABRA2 antibody) at dilution of 1:1000 incubated at room temperature for 1.5 hours.