

For Research Use Only

# DLL1 Polyclonal antibody

Catalog Number: 28544-1-AP **1 Publications**



## Basic Information

<b>Catalog Number:</b> 28544-1-AP	<b>GenBank Accession Number:</b> NM_005618	<b>Purification Method:</b> Antigen affinity purification
<b>Size:</b> 150ul , Concentration: 700 µg/ml by Nanodrop;	<b>GeneID (NCBI):</b> 28514	<b>Recommended Dilutions:</b> WB 1:1000-1:5000
<b>Source:</b> Rabbit	<b>Full Name:</b> delta-like 1 (Drosophila)	
<b>Isotype:</b> IgG	<b>Calculated MW:</b> 78 kDa	
<b>Immunogen Catalog Number:</b> AG29534	<b>Observed MW:</b> 70 kDa	

## Applications

<b>Tested Applications:</b> WB, ELISA	<b>Positive Controls:</b> WB : rat brain tissue, HUVEC cells, mouse brain tissue
<b>Cited Applications:</b> WB	
<b>Species Specificity:</b> Human, Mouse, Rat	
<b>Cited Species:</b> human	

## Background Information

The Notch pathway functions during diverse developmental and physiological processes. Notch receptor and its ligands, Delta and Jagged, are transmembrane proteins with large extracellular domains that consist primarily of epidermal growth factor (EGF)-like repeats (PMID: 16921404). Delta-like protein 1 (DLL1, also named as Delta1) is a ligand of NOTCH1, NOTCH2 and NOTCH3 receptors that binds the extracellular domain of Notch receptor in a cis and trans fashion manner (PMID: 11006133). DLL1 play a role in development of the central nervous system, somites and lymphocytes (PMID: 31353024). It is overexpressed in various cancers and is involved in the regulation of cancer progression (PMID: 32440154). DLL1 undergoes proteolytic processing in its extracellular domain by ADAM proteases and gamma-secretase (PMID: 17107962; 12794186).

## Notable Publications

Author	Pubmed ID	Journal	Application
Yali Xu	38161194	Drug Deliv Transl Res	WB

## Storage

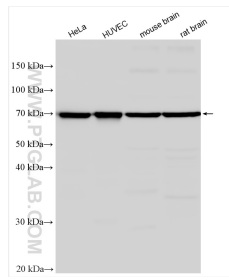
**Storage:**  
Store at -20°C. Stable for one year after shipment.  
**Storage Buffer:**  
PBS with 0.02% sodium azide and 50% glycerol pH 7.3.  
Aliquoting is unnecessary for -20°C storage

\*\*\* 20ul sizes contain 0.1% BSA

For technical support and original validation data for this product please contact:  
T: 1 (888) 4PTGLAB (1-888-478-4522) (toll free in USA), or 1(312) 455-8498 (outside USA) E: proteintech@ptglab.com W: ptglab.com

This product is exclusively available under Proteintech Group brand and is not available to purchase from any other manufacturer.

## Selected Validation Data



Various lysates were subjected to SDS PAGE followed by western blot with 28544-1-AP (DLL1 antibody) at dilution of 1:2500 incubated at room temperature for 1.5 hours.