

For Research Use Only

ABCE1 Polyclonal antibody

Catalog Number: 28548-1-AP

Featured Product

4 Publications



Basic Information

Catalog Number:

28548-1-AP

Size:

150ul, Concentration: 600 ug/ml by Nanodrop;

Source:

Rabbit

Isotype:

IgG

Immunogen Catalog Number:

AG29724

GenBank Accession Number:

BC016283

GeneID (NCBI):

6059

UNIPROT ID:

P61221

Full Name:

ATP-binding cassette, sub-family E (OABP), member 1

Calculated MW:

599 aa, 67 kDa

Observed MW:

68 kDa

Purification Method:

Antigen affinity purification

Recommended Dilutions:

WB 1:500-1:1000

IHC 1:50-1:500

Applications

Tested Applications:

WB, IHC, ELISA

Cited Applications:

WB, IHC

Species Specificity:

human

Cited Species:

human, mouse

Note-IHC: suggested antigen retrieval with TE buffer pH 9.0; (*) Alternatively, antigen retrieval may be performed with citrate buffer pH 6.0

Positive Controls:

WB : A549 cells, HEK-293 cells, HeLa cells, K-562 cells, MCF-7 cells, NCI-H1299 cells

IHC : human breast cancer tissue, human ovary tumor tissue, human gliomas tissue

Notable Publications

Author	Pubmed ID	Journal	Application
Rani Ojha	39315278	Res Sq	WB
Tejinder Pal Khaket	39161732	PNAS Nexus	WB
Nunziata Maio	38950322	J Clin Invest	WB

Storage

Storage:

Store at -20°C. Stable for one year after shipment.

Storage Buffer:

PBS with 0.02% sodium azide and 50% glycerol pH 7.3.

Aliquoting is unnecessary for -20°C storage

*** 20ul sizes contain 0.1% BSA

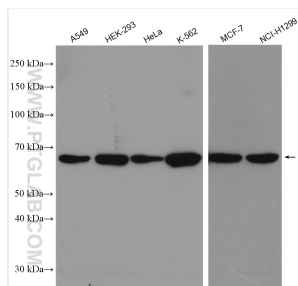
For technical support and original validation data for this product please contact:

T: 1 (888) 4PTGLAB (1-888-478-4522) (toll free in USA), or 1(312) 455-8498 (outside USA)

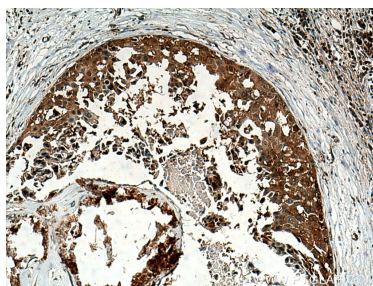
E: proteintech@ptglab.com
W: ptglab.com

This product is exclusively available under Proteintech Group brand and is not available to purchase from any other manufacturer.

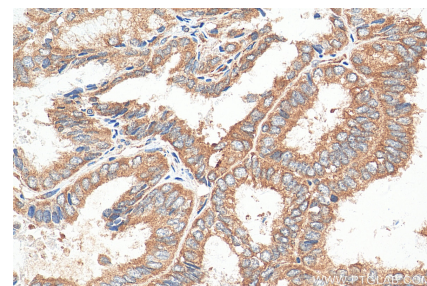
Selected Validation Data



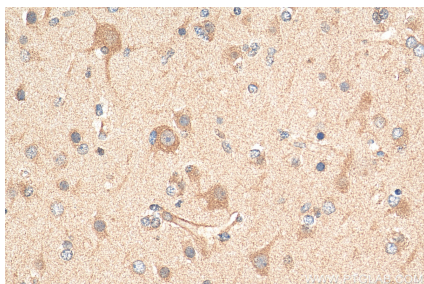
Various lysates were subjected to SDS PAGE followed by western blot with 28548-1-AP (ABCE1 antibody) at dilution of 1:800 incubated at room temperature for 1.5 hours.



Immunohistochemical analysis of paraffin-embedded human breast cancer tissue slide using 28548-1-AP (ABCE1 antibody) at dilution of 1:200 (under 10x lens). Heat mediated antigen retrieval with Tris-EDTA buffer (pH 9.0).



Immunohistochemical analysis of paraffin-embedded human ovary tumor tissue slide using 28548-1-AP (ABCE1 antibody) at dilution of 1:200 (under 40x lens). Heat mediated antigen retrieval with Tris-EDTA buffer (pH 9.0).



Immunohistochemical analysis of paraffin-embedded human gliomas tissue slide using 28548-1-AP (ABCE1 antibody) at dilution of 1:200 (under 40x lens). Heat mediated antigen retrieval with Tris-EDTA buffer (pH 9.0).