

For Research Use Only

Alpha-2-antiplasmin Polyclonal antibody



Catalog Number: 28549-1-AP

Basic Information

Catalog Number: 28549-1-AP	GenBank Accession Number: BC031592	Purification Method: Antigen affinity purification
Size: 150ul , Concentration: 600 µg/ml by Nanodrop;	GeneID (NCBI): 5345	Recommended Dilutions: WB 1:1000-1:4000 IHC 1:50-1:500 IF 1:50-1:500
Source: Rabbit	Full Name: serpin peptidase inhibitor, clade F (alpha-2 antiplasmin, pigment epithelium derived factor), member 2	
Isotype: IgG	Calculated MW: 491 aa, 55 kDa	
Immunogen Catalog Number: AG29670	Observed MW: 55 kDa	

Applications

Tested Applications:

IF, IHC, WB, ELISA

Species Specificity:

Human, mouse, rat

Note-IHC: suggested antigen retrieval with TE buffer pH 9.0; (*) Alternatively, antigen retrieval may be performed with citrate buffer pH 6.0

Positive Controls:

WB : HepG2 cells, THP-1 cells, mouse liver tissue, rat liver tissue

IHC : mouse liver tissue,

IF : HepG2 cells,

Background Information

SERPINF2, also termed Alpha-2-antiplasmin(a2-AP), a member of the serpin family of serine protease inhibitors. SERPINF2 is a major inhibitor of plasmin, which degrades fibrin and various other proteins. Consequently, the proper function of this gene has a major role in regulating the blood clotting pathway. Mutations in SERPINF2 result in alpha-2-plasmin inhibitor deficiency, which is characterized by severe hemorrhagic diathesis.

Storage

Storage:

Store at -20°C. Stable for one year after shipment.

Storage Buffer:

PBS with 0.02% sodium azide and 50% glycerol pH 7.3.

Aliquoting is unnecessary for -20°C storage

*** 20ul sizes contain 0.1% BSA

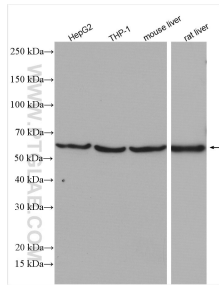
For technical support and original validation data for this product please contact:

T: 1 (888) 4PTGLAB (1-888-478-4522) (toll free in USA), or 1(312) 455-8498 (outside USA)

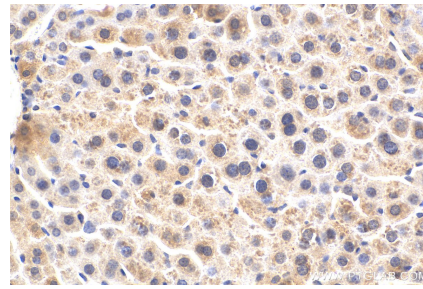
E: proteintech@ptglab.com
W: ptglab.com

This product is exclusively available under Proteintech Group brand and is not available to purchase from any other manufacturer.

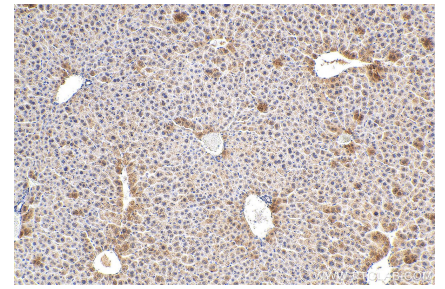
Selected Validation Data



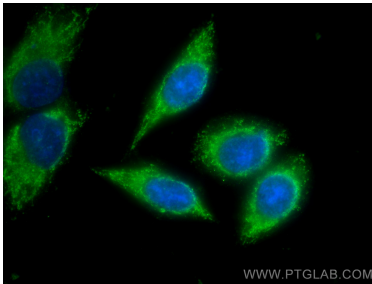
Various lysates were subjected to SDS PAGE followed by western blot with 28549-1-AP (Alpha-2-antiplasmin antibody) at dilution of 1:2000 incubated at room temperature for 1.5 hours.



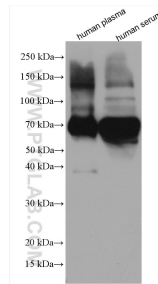
Immunohistochemical analysis of paraffin-embedded mouse liver tissue slide using 28549-1-AP (Alpha-2-antiplasmin antibody) at dilution of 1:200 (under 40x lens). Heat mediated antigen retrieval with Tris-EDTA buffer (pH 9.0).



Immunohistochemical analysis of paraffin-embedded mouse liver tissue slide using 28549-1-AP (Alpha-2-antiplasmin antibody) at dilution of 1:200 (under 10x lens). Heat mediated antigen retrieval with Tris-EDTA buffer (pH 9.0).



Immunofluorescent analysis of (-20°C Ethanol) fixed HepG2 cells using Alpha-2-antiplasmin antibody (28549-1-AP) at dilution of 1:200 and CoraLite®488-Conjugated AffiniPure Goat Anti-Rabbit IgG(H+L).



human plasma were subjected to SDS PAGE followed by western blot with 28549-1-AP (Alpha-2-antiplasmin antibody) at dilution of 1:2000 incubated at room temperature for 1.5 hours.