

For Research Use Only

HCFC1 Polyclonal antibody

Catalog Number: 28569-1-AP



Basic Information

Catalog Number:

28569-1-AP

Size:

150ul, Concentration: 650 ug/ml by Nanodrop;

Source:

Rabbit

Isotype:

IgG

Immunogen Catalog Number:

AG29663

GenBank Accession Number:

NM_005334

GeneID (NCBI):

3054

UNIPROT ID:

P51610

Full Name:

host cell factor C1 (VP16-accessory protein)

Calculated MW:

209 kDa

Observed MW:

300 kDa, 100-150 kDa

Purification Method:

Antigen affinity purification

Recommended Dilutions:

WB 1:1000-1:8000

IP 0.5-4.0 ug for 1.0-3.0 mg of total protein lysate

IHC 1:1000-1:4000

IF/ICC 1:50-1:500

Applications

Tested Applications:

WB, IHC, IF/ICC, IP, ELISA

Species Specificity:

human, mouse, rat

Note-IHC: suggested antigen retrieval with TE buffer pH 9.0; (*) Alternatively, antigen retrieval may be performed with citrate buffer pH 6.0

Positive Controls:

WB : HeLa cells, K-562 cells, NIH/3T3 cells, PC-12 cells, C2C12 cells, C6 cells

IP : HeLa cells,

IHC : mouse liver tissue, human lung cancer tissue, human urothelial carcinoma tissue, mouse cerebellum tissue, mouse lung tissue, mouse skin tissue, rat cerebellum tissue, rat lung tissue, rat skin tissue

IF/ICC : HeLa cells,

Background Information

HCFC1 (also known as HCF-1) was discovered in studies of herpes simplex virus (HSV) transcription. This nuclear coactivator is proteolytically cleaved at one of the six possible sites, resulting in the creation of an N-terminal chain and the corresponding C-terminal chain. The final form of this protein consists of noncovalently bound N- and C-terminal chains. The protein is involved in the control of the cell cycle and transcriptional regulation during herpes simplex virus infection. HCFC1 is a large protein of 300 kDa and is proteolytically processed into N- and C-terminal fragments of 150 kDa each.(PMID: 21295698)

Storage

Storage:

Store at -20°C. Stable for one year after shipment.

Storage Buffer:

PBS with 0.02% sodium azide and 50% glycerol pH 7.3.

Aliquoting is unnecessary for -20°C storage

*** 20ul sizes contain 0.1% BSA

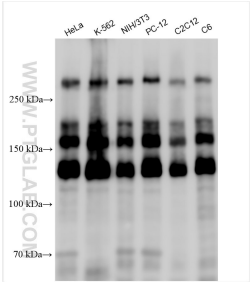
For technical support and original validation data for this product please contact:

T: 1 (888) 4PTGLAB (1-888-478-4522) (toll free in USA), or 1(312) 455-8498 (outside USA)

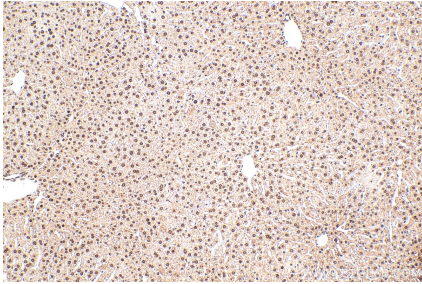
E: proteintech@ptglab.com
W: ptglab.com

This product is exclusively available under Proteintech Group brand and is not available to purchase from any other manufacturer.

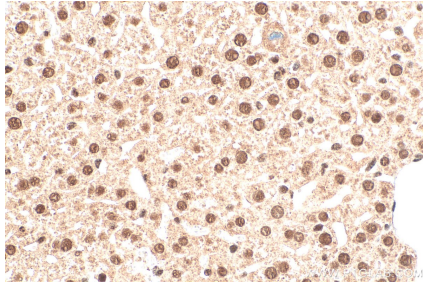
Selected Validation Data



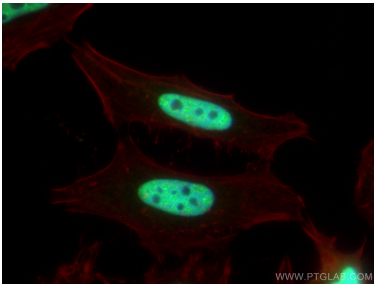
Various lysates were subjected to SDS PAGE followed by western blot with 28569-1-AP (HCFC1 antibody) at dilution of 1:4000 incubated at room temperature for 1.5 hours.



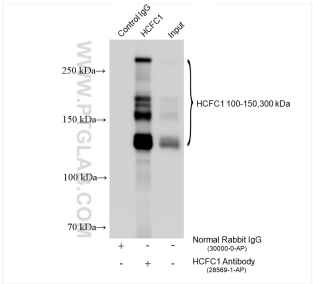
Immunohistochemical analysis of paraffin-embedded mouse liver tissue slide using 28569-1-AP (HCFC1 antibody) at dilution of 1:2000 (under 10x lens). Heat mediated antigen retrieval with Tris-EDTA buffer (pH 9.0).



Immunohistochemical analysis of paraffin-embedded mouse liver tissue slide using 28569-1-AP (HCFC1 antibody) at dilution of 1:2000 (under 40x lens). Heat mediated antigen retrieval with Tris-EDTA buffer (pH 9.0).



Immunofluorescent analysis of (4% PFA) fixed HeLa cells using HCFC1 antibody (28569-1-AP) at dilution of 1:200 and CoraLite®488-Conjugated AffiniPure Goat Anti-Rabbit IgG(H+L), CL594-phalloidin (red).



IP result of anti-HCFC1 (IP:28569-1-AP, 4ug; Detection:28569-1-AP 1:20000) with HeLa cells lysate 1600 ug.