

For Research Use Only

# HCFC1 Polyclonal antibody, PBS Only

Catalog Number: 28569-1-PBS



## Basic Information

Catalog Number:

28569-1-PBS

Size:

100ug, Concentration: 1 mg/ml by Nanodrop;

Source:

Rabbit

Isotype:

IgG

Immunogen Catalog Number:

AG29663

GenBank Accession Number:

NM\_005334

GeneID (NCBI):

3054

UNIPROT ID:

P51610

Full Name:

host cell factor C1 (VP16-accessory protein)

Calculated MW:

209 kDa

Observed MW:

300 kDa, 100-150 kDa

Purification Method:

Antigen affinity purification

## Applications

Tested Applications:

WB, IHC, IF/ICC, IP, Indirect ELISA

Species Specificity:

human, mouse, rat

## Background Information

HCFC1 (also known as HCF-1) was discovered in studies of herpes simplex virus (HSV) transcription. This nuclear coactivator is proteolytically cleaved at one of the six possible sites, resulting in the creation of an N-terminal chain and the corresponding C-terminal chain. The final form of this protein consists of noncovalently bound N- and C-terminal chains. The protein is involved in the control of the cell cycle and transcriptional regulation during herpes simplex virus infection. HCFC1 is a large protein of 300 kDa and is proteolytically processed into N- and C-terminal fragments of 150 kDa each.(PMID: 21295698)

## Storage

Storage:

Store at -80°C.

Storage Buffer:

PBS Only

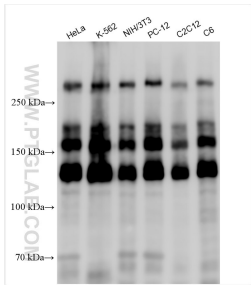
For technical support and original validation data for this product please contact:

T: 1 (888) 4PTGLAB (1-888-478-4522) (toll free in USA), or 1(312) 455-8498 (outside USA)

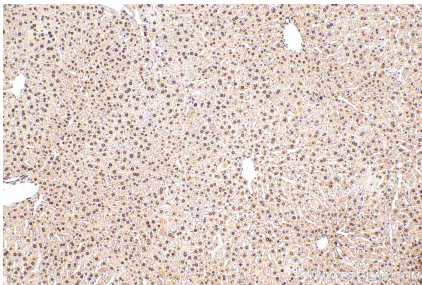
E: [proteintech@ptglab.com](mailto:proteintech@ptglab.com)  
W: [ptglab.com](http://ptglab.com)

This product is exclusively available under Proteintech Group brand and is not available to purchase from any other manufacturer.

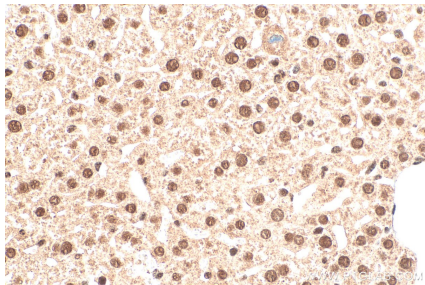
Selected Validation Data



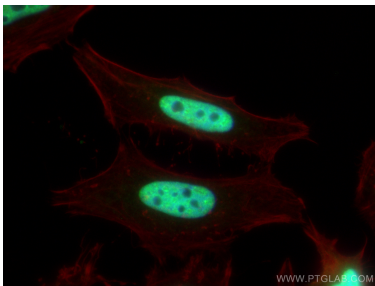
Various lysates were subjected to SDS PAGE followed by western blot with 28569-1-AP (HCFC1 antibody) at dilution of 1:4000 incubated at room temperature for 1.5 hours. This data was developed using the same antibody clone with 28569-1-PBS in a different storage buffer formulation.



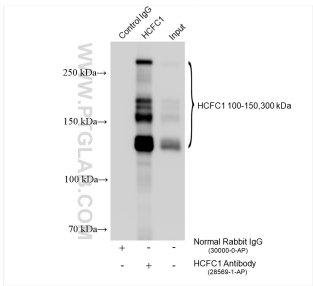
Immunohistochemical analysis of paraffin-embedded mouse liver tissue slide using 28569-1-AP (HCFC1 antibody) at dilution of 1:2000 (under 10x lens). Heat mediated antigen retrieval with Tris-EDTA buffer (pH 9.0). This data was developed using the same antibody clone with 28569-1-PBS in a different storage buffer formulation.



Immunohistochemical analysis of paraffin-embedded mouse liver tissue slide using 28569-1-AP (HCFC1 antibody) at dilution of 1:2000 (under 40x lens). Heat mediated antigen retrieval with Tris-EDTA buffer (pH 9.0). This data was developed using the same antibody clone with 28569-1-PBS in a different storage buffer formulation.



Immunofluorescent analysis of (4% PFA) fixed HeLa cells using HCFC1 antibody (28569-1-AP) at dilution of 1:200 and CoraLite® 488-Conjugated AffiniPure Goat Anti-Rabbit IgG(H+L), CL594-phalloidin (red). This data was developed using the same antibody clone with 28569-1-PBS in a different storage buffer formulation.



IP result of anti-HCFC1 (IP:28569-1-AP, 4ug; Detection:28569-1-AP 1:20000) with HeLa cells lysate 1600 ug. This data was developed using the same antibody clone with 28569-1-PBS in a different storage buffer formulation.