

PTPLAD1 Polyclonal antibody

Catalog Number: 28572-1-AP

Basic Information

Catalog Number: 28572-1-AP	GenBank Accession Number: NM_016395	Purification Method: Antigen affinity purification
Size: 150ul , Concentration: 700 µg/ml by Nanodrop and 367 µg/ml by Bradford method using BSA as the standard;	GeneID (NCBI): 51495	Recommended Dilutions: WB 1:500-1:2000 IHC 1:50-1:500
Source: Rabbit	Full Name: protein tyrosine phosphatase-like A domain containing 1	
Isotype: IgG	Calculated MW: 43 kDa	
Immunogen Catalog Number: AG29557	Observed MW: 43 kDa	

Applications

Tested Applications:
IHC, WB, ELISA

Species Specificity:
Human

Note-IHC: suggested antigen retrieval with **TE buffer pH 9.0; (*) Alternatively, antigen retrieval may be performed with citrate buffer pH 6.0**

Positive Controls:

WB : human placenta tissue,

IHC : human breast cancer tissue, human liver cancer tissue, mouse brain tissue

Background Information

Storage

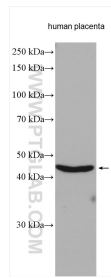
Storage:
Store at -20°C. Stable for one year after shipment.
Storage Buffer:
PBS with 0.02% sodium azide and 50% glycerol pH 7.3.
Aliquoting is unnecessary for -20°C storage

*** 20ul sizes contain 0.1% BSA

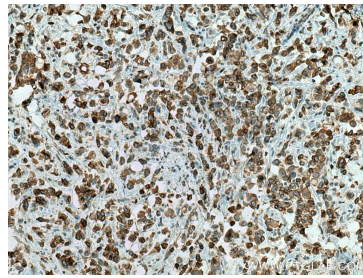
For technical support and original validation data for this product please contact:
T: 1 (888) 4PTGLAB (1-888-478-4522) (toll free in USA), or 1(312) 455-8498 (outside USA)
E: proteintech@ptglab.com
W: ptglab.com

This product is exclusively available under Proteintech Group brand and is not available to purchase from any other manufacturer.

Selected Validation Data



Human placenta tissue were subjected to SDS PAGE followed by western blot with 28572-1-AP (PTPLAD1 antibody) at dilution of 1:1000 incubated at room temperature for 1.5 hours.



Immunohistochemical analysis of paraffin-embedded human breast cancer tissue slide using 28572-1-AP (PTPLAD1 antibody) at dilution of 1:200 (under 10x lens). Heat mediated antigen retrieval with Tris-EDTA buffer (pH 9.0).