

For Research Use Only

# PDE6D Polyclonal antibody

Catalog Number: 28573-1-AP

Featured Product



## Basic Information

### Catalog Number:

28573-1-AP

### Size:

150ul, Concentration: 500 ug/ml by Nanodrop and 300 ug/ml by Bradford method using BSA as the standard;

### Source:

Rabbit

### Isotype:

IgG

### Immunogen Catalog Number:

AG29563

### GenBank Accession Number:

NM\_002601

### GeneID (NCBI):

5147

### UNIPROT ID:

O43924

### Full Name:

phosphodiesterase 6D, cGMP-specific, rod, delta

### Calculated MW:

17 kDa

### Observed MW:

14-17 kDa

### Purification Method:

Antigen affinity purification

### Recommended Dilutions:

WB 1:1000-1:5000

## Applications

### Tested Applications:

WB, ELISA

### Species Specificity:

human, mouse, rat

### Positive Controls:

WB: HeLa cells, HepG2 cells, human placenta tissue, mouse brain tissue, rat brain tissue

## Background Information

PDE6D, also known as PDED, belongs to the PDE6D/unc-119 family. PDE6D is a ubiquitously expressed prenyl-binding protein. By binding to prenyl moieties, PDE6D mediates the shuttling of prenylated proteins between membranes. Thereby, it regulates the membrane association of Ras and Rap GTPases (PMID: 36672247). In addition, research has shown that PDE6D is overexpressed in liver cancer and correlated with tumor stages, grading, and ERK activation (PMID: 30901922). The calculated molecular weight of PDE6D is 17 kDa.

## Storage

### Storage:

Store at -20°C. Stable for one year after shipment.

### Storage Buffer:

PBS with 0.02% sodium azide and 50% glycerol pH 7.3.

Aliquoting is unnecessary for -20°C storage

\*\*\* 20ul sizes contain 0.1% BSA

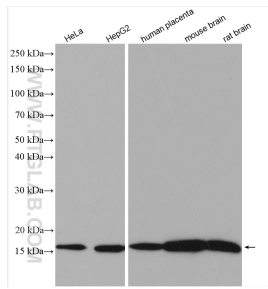
For technical support and original validation data for this product please contact:

T: 1 (888) 4PTGLAB (1-888-478-4522) (toll free in USA), or 1(312) 455-8498 (outside USA)

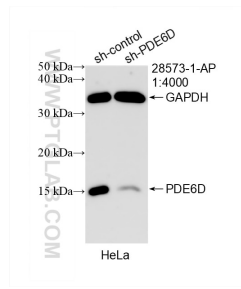
E: [proteintech@ptglab.com](mailto:proteintech@ptglab.com)  
W: [ptglab.com](http://ptglab.com)

This product is exclusively available under Proteintech Group brand and is not available to purchase from any other manufacturer.

## Selected Validation Data



Various lysates were subjected to SDS PAGE followed by western blot with 28573-1-AP (PDE6D antibody) at dilution of 1:2500 incubated at room temperature for 1.5 hours.



WB result of PDE6D antibody (28573-1-AP; 1:4000; incubated at room temperature for 1.5 hours) with sh-Control and sh-PDE6D transfected HeLa cells.