

For Research Use Only

# NOTCH2 Polyclonal antibody

Catalog Number: 28580-1-AP

Featured Product

12 Publications



## Basic Information

### Catalog Number:

28580-1-AP

### Size:

150ul, Concentration: 700 ug/ml by Nanodrop and 333 ug/ml by Bradford method using BSA as the standard;

### Source:

Rabbit

### Isotype:

IgG

### Immunogen Catalog Number:

AG29413

### GenBank Accession Number:

NM\_024408

### GeneID (NCBI):

4853

### UNIPROT ID:

Q04721

### Full Name:

Notch homolog 2 (Drosophila)

### Calculated MW:

265 kDa

### Observed MW:

110 kDa, 265 kDa

### Purification Method:

Antigen affinity purification

### Recommended Dilutions:

WB 1:1000-1:4000

IP 0.5-4.0 ug for 1.0-3.0 mg of total protein lysate

IHC 1:50-1:500

IF/ICC 1:200-1:800

## Applications

### Tested Applications:

WB, IHC, IF/ICC, IP, ELISA

### Cited Applications:

WB, IHC, IF, CoIP

### Species Specificity:

human

### Cited Species:

human, mouse, rat

**Note-IHC: suggested antigen retrieval with TE buffer pH 9.0; (\*) Alternatively, antigen retrieval may be performed with citrate buffer pH 6.0**

### Positive Controls:

WB: U-87 MG cells, HEK-293T cells

IP: HEK-293 cells, U-87 MG cells

IHC: human stomach tissue,

IF/ICC: HEK-293 cells,

## Background Information

NOTCH2 (Neurogenic locus notch homolog protein 2) belongs to the NOTCH family. In kidney, previous reports demonstrated that Notch1 and Notch2 were activated in mammalian nephrogenesis (PMID: 24526233). Notch2 is expressed in many cell types of most lineages in the hematolymphoid compartment and has specific roles in differentiation and function of various immune cells. Notch2 is required for development of splenic marginal zone B cells and regulates differentiation of dendritic cells (DCs) in the spleen. Notch2 appears to play some specific roles in the intestinal immunity, given that the fate of mast cells and a subset of DCs is regulated by Notch2 in the intestine. Notch2 also has important roles in helper T cell divergence from naïve CD4 T cells and activation of cytotoxic T cells (PMID: 22695918).

## Notable Publications

Author	Pubmed ID	Journal	Application
Xianyun Xu	36158688	Front Oncol	WB
Yunhao Qing	35693717	Transl Androl Urol	IHC
Marianna Naki	35563580	Int J Mol Sci	CoIP

## Storage

### Storage:

Store at -20°C. Stable for one year after shipment.

### Storage Buffer:

PBS with 0.02% sodium azide and 50% glycerol, pH7.3

Aliquoting is unnecessary for -20°C storage

\*\*\* 20ul sizes contain 0.1% BSA

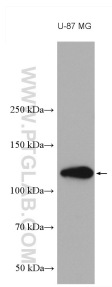
For technical support and original validation data for this product please contact:

T: 1 (888) 4PTGLAB (1-888-478-4522) (toll free in USA), or 1(312) 455-8498 (outside USA)

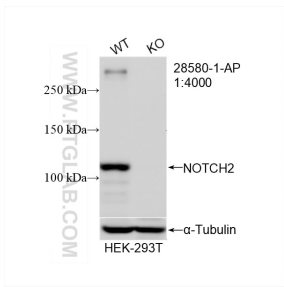
E: [proteintech@ptglab.com](mailto:proteintech@ptglab.com)  
W: [ptglab.com](http://ptglab.com)

This product is exclusively available under Proteintech Group brand and is not available to purchase from any other manufacturer.

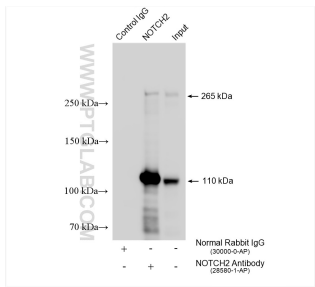
Selected Validation Data



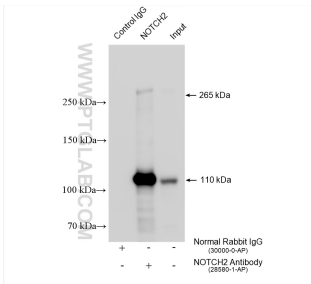
U-87 MG cells were subjected to SDS PAGE followed by western blot with 28580-1-AP (NOTCH2 antibody) at dilution of 1:2000 incubated at room temperature for 1.5 hours.



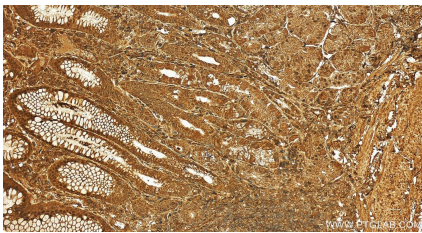
WB result of NOTCH2 antibody (28580-1-AP; 1:4000; room temperature for 1.5 hours) with wild-type and NOTCH2 knockout HEK-293T cells.



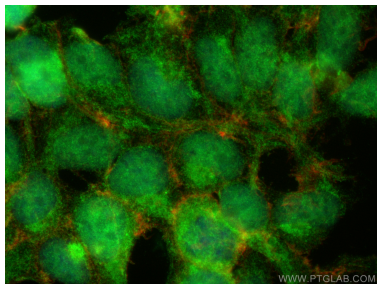
IP result of anti-NOTCH2 (IP:28580-1-AP, 4ug; Detection:28580-1-AP 1:5000) with U-87 MG cells lysate 1960 ug.



IP result of anti-NOTCH2 (IP:28580-1-AP, 4ug; Detection:28580-1-AP 1:5000) with HEK-293 cells lysate 1575 ug.



Immunohistochemical analysis of paraffin-embedded human stomach tissue slide using 28580-1-AP (NOTCH2 antibody) at dilution of 1:200 (under 20x lens). Heat mediated antigen retrieval with Tris-EDTA buffer (pH 9.0).



Immunofluorescent analysis of (4% PFA) fixed HEK-293 cells using NOTCH2 antibody (28580-1-AP) at dilution of 1:400 and CoraLite®488-Conjugated AffiniPure Goat Anti-Rabbit IgG(H+L) (SA00013-2), CL594-Phalloidin (red).