

For Research Use Only

KIF23 Polyclonal antibody

Catalog Number: 28587-1-AP

Featured Product

5 Publications



Basic Information

Catalog Number: 28587-1-AP	GenBank Accession Number: NM_138555	Purification Method: Antigen affinity purification
Size: 150ul, Concentration: 850 µg/ml by Nanodrop;	GeneID (NCBI): 9493	Recommended Dilutions: WB 1:1000-1:5000 IHC 1:50-1:500
Source: Rabbit	Full Name: kinesin family member 23	
Isotype: IgG	Calculated MW: 110 kDa	
Immunogen Catalog Number: AG29346	Observed MW: 110 kDa	

Applications

Tested Applications: IHC, WB, ELISA	Positive Controls:
Cited Applications: IF, IHC, WB	WB: HeLa cells, U-87 MG cells
Species Specificity: Human	IHC: human stomach cancer tissue, human liver cancer tissue
Cited Species: human	
Note-IHC: suggested antigen retrieval with TE buffer pH 9.0; (*) Alternatively, antigen retrieval may be performed with citrate buffer pH 6.0	

Background Information

Notable Publications

Author	Pubmed ID	Journal	Application
Mei-Ling Dong	35784274	Front Immunol	WB
Umut Batman	35849559	PLoS Biol	IF
Xin He	34933054	Toxicol Appl Pharmacol	WB

Storage

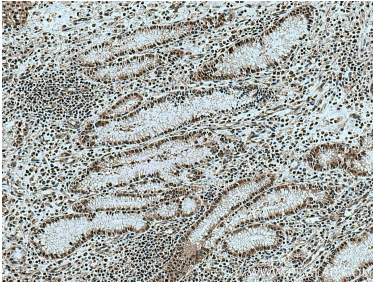
Storage:
Store at -20°C. Stable for one year after shipment.
Storage Buffer:
PBS with 0.02% sodium azide and 50% glycerol pH 7.3.
Aliquoting is unnecessary for -20°C storage

*** 20ul sizes contain 0.1% BSA

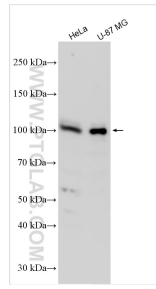
For technical support and original validation data for this product please contact:
T: 1 (888) 4PTGLAB (1-888-478-4522) (toll free in USA), or 1(312) 455-8498 (outside USA)
E: proteintech@ptglab.com
W: ptglab.com

This product is exclusively available under Proteintech Group brand and is not available to purchase from any other manufacturer.

Selected Validation Data



Immunohistochemical analysis of paraffin-embedded human stomach cancer tissue slide using 28587-1-AP (KIF23 antibody) at dilution of 1:200 (under 10x lens). Heat mediated antigen retrieval with Tris-EDTA buffer (pH 9.0).



Various lysates were subjected to SDS PAGE followed by western blot with 28587-1-AP (KIF23 antibody) at dilution of 1:2500 incubated at room temperature for 1.5 hours.