

For Research Use Only

APOL3 Polyclonal antibody, PBS Only

Catalog Number: 28591-1-PBS



Basic Information

Catalog Number:

28591-1-PBS

Size:

100ug, Concentration: 1 mg/ml by Nanodrop;

Source:

Rabbit

Isotype:

IgG

Immunogen Catalog Number:

AG29687

GenBank Accession Number:

NM_145640

GeneID (NCBI):

80833

UNIPROT ID:

O95236

Full Name:

apolipoprotein L, 3

Calculated MW:

44 kDa

Observed MW:

44 kDa

Purification Method:

Antigen affinity purification

Applications

Tested Applications:

WB, Indirect ELISA

Species Specificity:

human

Background Information

Apolipoprotein L3 (APOL3) is a member of the apolipoprotein L gene family, and it is present in a cluster with other family members on chromosome 22. APOL3 is localized in the cytoplasm and plays a central role in cholesterol transport, affecting the movement of lipids, including cholesterol, and allowing the binding of lipids to organelles.

Storage

Storage:

Store at -80°C.

Storage Buffer:

PBS only, pH7.3

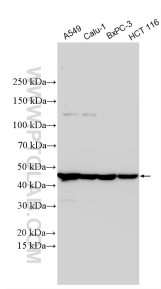
For technical support and original validation data for this product please contact:

T: 1 (888) 4PTGLAB (1-888-478-4522) (toll free in USA), or 1(312) 455-8498 (outside USA)

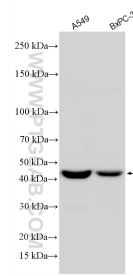
E: proteintech@ptglab.com
W: ptglab.com

This product is exclusively available under Proteintech Group brand and is not available to purchase from any other manufacturer.

Selected Validation Data



Various lysates were subjected to SDS PAGE followed by western blot with 28591-1-AP (APOL3 antibody) at dilution of 1:3000 incubated at room temperature for 1.5 hours. This data was developed using the same antibody clone with 28591-1-PBS in a different storage buffer formulation.



Various lysates were subjected to SDS PAGE followed by western blot with 28591-1-AP (APOL3 antibody) at dilution of 1:3000 incubated at room temperature for 1.5 hours. This data was developed using the same antibody clone with 28591-1-PBS in a different storage buffer formulation.