

For Research Use Only

# Siglec-15 Polyclonal antibody

Catalog Number: 28594-1-AP



## Basic Information

### Catalog Number:

28594-1-AP

### Size:

150ul, Concentration: 700 ug/ml by Nanodrop;

### Source:

Rabbit

### Isotype:

IgG

### Immunogen Catalog Number:

AG29829

### GenBank Accession Number:

NM\_213602

### GeneID (NCBI):

284266

### UNIPROT ID:

Q6ZMC9

### Full Name:

sialic acid binding Ig-like lectin 15

### Calculated MW:

36 kDa

### Observed MW:

38-40 kDa

### Purification Method:

Antigen affinity purification

### Recommended Dilutions:

WB 1:2000-1:10000

## Applications

### Tested Applications:

WB, ELISA

### Species Specificity:

Human

### Positive Controls:

WB : A549 cells, NCI-H1299 cells, PC-3 cells

## Background Information

Sialic acid binding Ig-like lectin 15 (Siglec-15) is a member of the Siglec family of glycan-recognition proteins. Siglec-15 is a type-I transmembrane protein consisting of two immunoglobulin (Ig)-like domains, a transmembrane domain, and a short cytoplasmic tail (PMID: 17483134). It is mainly expressed on a subset of myeloid lineage cells and can be upregulated in many cancers (PMID: 32939323). Siglec-15 has been reported as an immune suppressor and a potential target for normalization cancer immunotherapy (PMID: 30833750). Siglec-15 has a calculated molecular weight of 36 kDa. It has been detected at 38-40 kDa due to glycosylation (PMID: 32921411).

## Storage

### Storage:

Store at -20°C. Stable for one year after shipment.

### Storage Buffer:

PBS with 0.02% sodium azide and 50% glycerol pH 7.3.

Aliquoting is unnecessary for -20°C storage

\*\*\* 20ul sizes contain 0.1% BSA

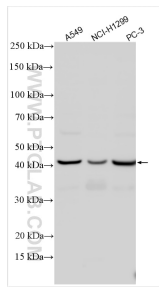
For technical support and original validation data for this product please contact:

T: 1 (888) 4PTGLAB (1-888-478-4522) (toll free in USA), or 1(312) 455-8498 (outside USA)

E: [proteintech@ptglab.com](mailto:proteintech@ptglab.com)  
W: [ptglab.com](http://ptglab.com)

This product is exclusively available under Proteintech Group brand and is not available to purchase from any other manufacturer.

## Selected Validation Data



Various lysates were subjected to SDS PAGE followed by western blot with 28594-1-AP (Siglec-15 antibody) at dilution of 1:5000 incubated at room temperature for 1.5 hours.