

For Research Use Only

Ins1 Polyclonal antibody

Catalog Number: 28609-1-AP



Basic Information

Catalog Number: 28609-1-AP	GenBank Accession Number: NM_008386	Purification Method: Antigen affinity purification
Size: 150ul , Concentration: 500 µg/ml by Nanodrop;	GeneID (NCBI): 16333	Recommended Dilutions: WB 1:500-1:1000 IHC 1:1000-1:4000
Source: Rabbit	Full Name: insulin I	
Isotype: IgG	Calculated MW: 12 kDa	
Immunogen Catalog Number: AG29989	Observed MW: 12 kDa	

Applications

Tested Applications: IHC, WB, ELISA	Positive Controls:
Species Specificity: mouse, rat	WB : rat pancreas tissue, IHC : rat pancreas tissue, mouse pancreas tissue

Note-IHC: suggested antigen retrieval with TE buffer pH 9.0; (*) Alternatively, antigen retrieval may be performed with citrate buffer pH 6.0

Background Information

insulin I is a peptide hormone that plays a vital role in the regulation of carbohydrate and lipid metabolism. The encoded precursor protein undergoes proteolytic cleavage to produce a disulfide-linked heterodimeric functional protein that is stored in secretory granules. An increase in blood glucose levels, among others, induces the release of insulin from the secretory granules. Mice deficient in the functional hormone encoded by this gene develop diabetes mellitus.

Storage

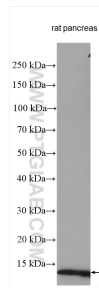
Storage:
Store at -20°C. Stable for one year after shipment.
Storage Buffer:
PBS with 0.02% sodium azide and 50% glycerol pH 7.3.
Aliquoting is unnecessary for -20°C storage

*** 20ul sizes contain 0.1% BSA

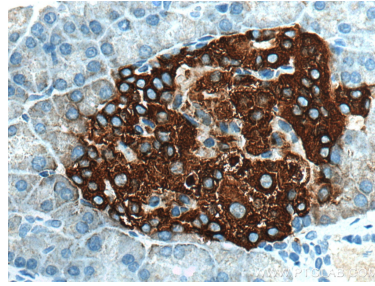
For technical support and original validation data for this product please contact:
T: 1 (888) 4PTGLAB (1-888-478-4522) (toll free in USA), or 1(312) 455-8498 (outside USA)
E: proteintech@ptglab.com
W: ptglab.com

This product is exclusively available under Proteintech Group brand and is not available to purchase from any other manufacturer.

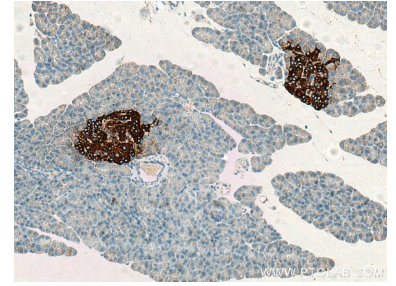
Selected Validation Data



Rat pancreas tissue were subjected to SDS PAGE followed by western blot with 28609-1-AP (insulin1 antibody) at dilution of 1:800 incubated at room temperature for 1.5 hours.



Immunohistochemical analysis of paraffin-embedded rat pancreas tissue slide using 28609-1-AP (insulin1 antibody) at dilution of 1:2000 (under 40x lens). Heat mediated antigen retrieval with Tris-EDTA buffer (pH 9.0).



Immunohistochemical analysis of paraffin-embedded rat pancreas tissue slide using 28609-1-AP (insulin1 antibody) at dilution of 1:2000 (under 10x lens). Heat mediated antigen retrieval with Tris-EDTA buffer (pH 9.0).