

For Research Use Only

# PPP1CA Polyclonal antibody

Catalog Number: 28617-1-AP



## Basic Information

|   |  |   |
|---|--|---|
| <b>Catalog Number:</b><br>28617-1-AP                          | <b>GenBank Accession Number:</b><br>BC001888                                 | <b>Purification Method:</b><br>Antigen affinity purification        |
| <b>Size:</b><br>150ul , Concentration: 350 µg/ml by Nanodrop; | <b>GeneID (NCBI):</b><br>5499  | <b>Recommended Dilutions:</b><br>WB 1:1000-1:8000<br>IHC 1:50-1:500 |
| <b>Source:</b><br>Rabbit                                      | <b>Full Name:</b><br>protein phosphatase 1, catalytic subunit, alpha isoform |   |
| <b>Isotype:</b><br>IgG  | <b>Calculated MW:</b><br>330 aa, 38 kDa                                      |   |
| <b>Immunogen Catalog Number:</b><br>AG28451                   | <b>Observed MW:</b><br>37 kDa  |   |

## Applications

|   |  |
|---|--|
| <b>Tested Applications:</b><br>IHC, WB, ELISA   | <b>Positive Controls:</b>                |
| <b>Species Specificity:</b><br>Human  | <b>WB :</b> HeLa cells, LNCaP cells      |
| <b>Note-IHC:</b> suggested antigen retrieval with <b>TE buffer pH 9.0; (*) Alternatively, antigen retrieval may be performed with citrate buffer pH 6.0</b> | <b>IHC :</b> human breast cancer tissue, |

## Background Information

### Storage

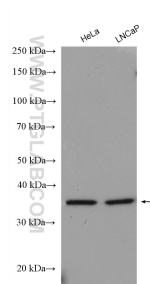
**Storage:**  
Store at -20°C. Stable for one year after shipment.  
**Storage Buffer:**  
PBS with 0.02% sodium azide and 50% glycerol pH 7.3.  
Aliquoting is unnecessary for -20°C storage

\*\*\* 20ul sizes contain 0.1% BSA

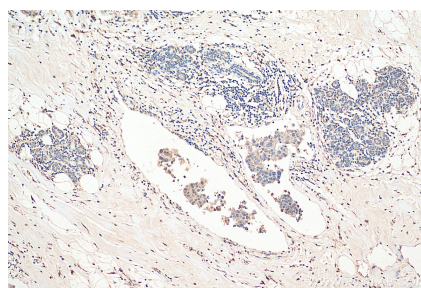
For technical support and original validation data for this product please contact:  
T: 1 (888) 4PTGLAB (1-888-478-4522) (toll free in USA), or 1(312) 455-8498 (outside USA)  
E: [proteintech@ptglab.com](mailto:proteintech@ptglab.com)  
W: [ptglab.com](http://ptglab.com)

This product is exclusively available under Proteintech Group brand and is not available to purchase from any other manufacturer.

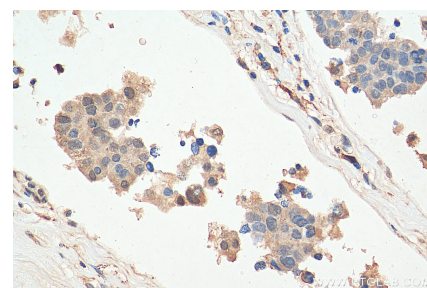
## Selected Validation Data



Various lysates were subjected to SDS PAGE followed by western blot with 28617-1-AP (PPP1CA antibody) at dilution of 1:4000 incubated at room temperature for 1.5 hours.



Immunohistochemical analysis of paraffin-embedded human breast cancer tissue slide using 28617-1-AP (PPP1CA antibody) at dilution of 1:200 (under 10x lens). Heat mediated antigen retrieval with Tris-EDTA buffer (pH 9.0).



Immunohistochemical analysis of paraffin-embedded human breast cancer tissue slide using 28617-1-AP (PPP1CA antibody) at dilution of 1:200 (under 40x lens). Heat mediated antigen retrieval with Tris-EDTA buffer (pH 9.0).