

For Research Use Only

KLHL32 Polyclonal antibody, PBS Only

Catalog Number:28621-1-PBS



Basic Information

Catalog Number:

28621-1-PBS

Size:

100ug , Concentration: 1 mg/ml by Nanodrop;

Source:

Rabbit

Isotype:

IgG

Immunogen Catalog Number:

AG29003

GenBank Accession Number:

BC071627

GeneID (NCBI):

114792

UNIPROT ID:

Q96NJ5

Full Name:

kelch-like 32 (Drosophila)

Calculated MW:

470 aa, 53 kDa

Observed MW:

70 kDa

Purification Method:

Antigen affinity purification

Applications

Tested Applications:

WB, IF/ICC, Indirect ELISA

Species Specificity:

human

Background Information

KLHL32 (Kelch-like protein 32), also known BKLHD5, which is located in the cytoplasm. The expression level is high in the central nervous system, especially in astrocytes. In addition, it is also expressed in the motor cilia of fallopian tube. But the overall expression abundance is low. KLHL32 is mainly involved in the intracellular ubiquitination process. Ubiquitin is an important cellular regulatory mechanism, through which protein can be labeled to degrade or change its function. KLHL32 interacts with other protein through its BTB domain and Kelch repeat domain to help regulate this process. It is also a prognostic marker in glioblastoma and renal clear cell carcinoma. The molecular weight of KLHL32 is 70 kDa.

Storage

Storage:

Store at -80°C.

Storage Buffer:

PBS only, pH7.3

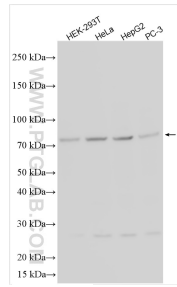
For technical support and original validation data for this product please contact:

T: 1 (888) 4PTGLAB (1-888-478-4522) (toll free in USA), or 1(312) 455-8498 (outside USA)

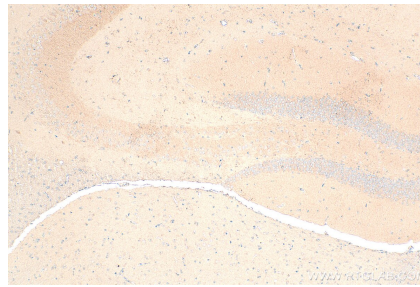
E: proteintech@ptglab.com
W: ptglab.com

This product is exclusively available under Proteintech Group brand and is not available to purchase from any other manufacturer.

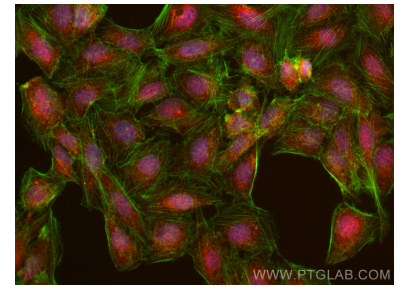
Selected Validation Data



Various lysates were subjected to SDS PAGE followed by western blot with 28621-1-AP (KLHL32 antibody) at dilution of 1:300 incubated at room temperature for 1.5 hours. This data was developed using the same antibody clone with 28621-1-PBS in a different storage buffer formulation.



Immunohistochemical analysis of paraffin-embedded mouse brain tissue slide using 28621-1-AP (KLHL32 antibody) at dilution of 1:200 (under 10x lens). Heat mediated antigen retrieval with Tris-EDTA buffer (pH 9.0). This data was developed using the same antibody clone with 28621-1-PBS in a different storage buffer formulation.



Immunofluorescent analysis of (4% PFA) fixed U2OS cells using KLHL32 antibody (28621-1-AP) at dilution of 1:200 and CoraLite®594-Conjugated Goat Anti-Rabbit IgG(H+L) (SA00013-4), CL488-Phalloidin (red). This data was developed using the same antibody clone with 28621-1-PBS in a different storage buffer formulation.