

For Research Use Only

BCAT1 Polyclonal antibody

Catalog Number: 28622-1-AP **1 Publications**



Basic Information

Catalog Number: 28622-1-AP	GenBank Accession Number: BC033864	Purification Method: Antigen affinity purification
Size: 150ul, Concentration: 700 µg/ml by Nanodrop and 333 µg/ml by Bradford method using BSA as the standard;	GeneID (NCBI): 586	Recommended Dilutions: WB 1:500-1:3000 IHC 1:50-1:500
Source: Rabbit	Full Name: branched chain aminotransferase 1, cytosolic	
Isotype: IgG	Calculated MW: 320 aa, 36 kDa	
Immunogen Catalog Number: AG28998	Observed MW: 43-48 kDa	

Applications

Tested Applications: IHC, WB, ELISA	Positive Controls: WB: C6 cells, Jurkat cells
Cited Applications: IHC	IHC: human liver cancer tissue, human lung cancer tissue, human gliomas tissue
Species Specificity: Human, rat	
Cited Species: human	

Note-IHC: suggested antigen retrieval with TE buffer pH 9.0; (*) Alternatively, antigen retrieval may be performed with citrate buffer pH 6.0

Background Information

BCAT1, also named as branched-chain amino acid transaminase1, is a cytosolic enzyme responsible for the reversible transamination of leucine, isoleucine and valine that catalyzes the transformation of branched-chain L-amino acids (BCAA) into branched-chain α-ketoacids (BCKA), thereby providing macromolecule precursors. It has been reported that BCAT1 is associated with tumor growth and disease progression (PMID:29255149).

Notable Publications

Author	Pubmed ID	Journal	Application
Hongming Wang	33760210	Oncol Rep	IHC

Storage

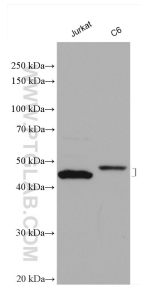
Storage:
Store at -20°C. Stable for one year after shipment.
Storage Buffer:
PBS with 0.02% sodium azide and 50% glycerol pH 7.3.
Aliquoting is unnecessary for -20°C storage

*** 20ul sizes contain 0.1% BSA

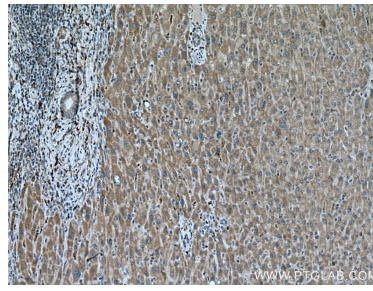
For technical support and original validation data for this product please contact:
T: 1 (888) 4PTGLAB (1-888-478-4522) (toll free in USA), or 1(312) 455-8498 (outside USA)
E: proteintech@ptglab.com
W: ptglab.com

This product is exclusively available under Proteintech Group brand and is not available to purchase from any other manufacturer.

Selected Validation Data



Various lysates were subjected to SDS PAGE followed by western blot with 28622-1-AP (BCAT1 antibody) at dilution of 1:1500 incubated at room temperature for 1.5 hours.



Immunohistochemical analysis of paraffin-embedded human liver cancer tissue slide using 28622-1-AP (BCAT1 antibody) at dilution of 1:200 (under 10x lens). Heat mediated antigen retrieval with Tris-EDTA buffer (pH 9.0).