

For Research Use Only

TLE2 Polyclonal antibody

Catalog Number: 28623-1-AP



Basic Information

Catalog Number:

28623-1-AP

Size:

150ul , Concentration: 450 ug/ml by Nanodrop;

Source:

Rabbit

Isotype:

IgG

Immunogen Catalog Number:

AG8930

GenBank Accession Number:

BC017364

GeneID (NCBI):

7089

UNIPROT ID:

Q04725

Full Name:

transducin-like enhancer of split 2 (E(sp1) homolog, Drosophila)

Calculated MW:

743 aa, 80 kDa

Observed MW:

67-80 kDa

Purification Method:

Antigen affinity purification

Recommended Dilutions:

WB 1:500-1:2000

Applications

Tested Applications:

WB, ELISA

Species Specificity:

Human, mouse, rat

Positive Controls:

WB : K-562 cells, mouse heart tissue, rat heart tissue

Storage

Storage:

Store at -20°C. Stable for one year after shipment.

Storage Buffer:

PBS with 0.02% sodium azide and 50% glycerol pH 7.3.

Aliquoting is unnecessary for -20°C storage

*** 20ul sizes contain 0.1% BSA

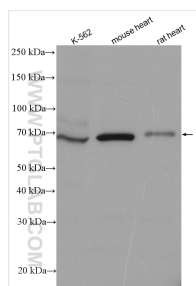
For technical support and original validation data for this product please contact:

T: 1 (888) 4PTGLAB (1-888-478-4522) (toll free in USA), or 1(312) 455-8498 (outside USA)

E: proteintech@ptglab.com
W: ptglab.com

This product is exclusively available under Proteintech Group brand and is not available to purchase from any other manufacturer.

Selected Validation Data



Various lysates were subjected to SDS PAGE followed by western blot with 28623-1-AP (TLE2 antibody) at dilution of 1:1000 incubated at room temperature for 1.5 hours.