

For Research Use Only

SARM1 Polyclonal antibody, PBS Only

Catalog Number:28625-1-PBS



Basic Information

Catalog Number: 28625-1-PBS	GenBank Accession Number: NM_015077	Purification Method: Antigen affinity purification
Size: 100ug , Concentration: 1 mg/ml by Nanodrop;	GeneID (NCBI): 23098	
Source: Rabbit	UNIPROT ID: Q6SZW1	
Isotype: IgG	Full Name: sterile alpha and TIR motif containing 1	
Immunogen Catalog Number: AG29531	Calculated MW: 79 kDa	
	Observed MW: 70-80 kDa	

Applications

Tested Applications:
WB, IHC, IF/ICC, FC (Intra), Indirect ELISA

Species Specificity:
human, mouse, rat

Background Information

SARM1 (sterile alpha and Toll/interleukin-1 receptor motif-containing 1) is also named as KIAA0524, SAMD2 and SARM. SARM1 is the major pro-degenerative protein in axons (PMID: 32152523). SARM1 is the central executioner of pathological axon degeneration and is an inducible NAD⁺-cleavage enzyme that is activated by the loss of the NAD⁺ biosynthetic enzyme NMNAT2 (PMID: 33657413). SARM1 is involved in innate immune response: inhibits both TICAM1/TRIF- and MYD88-dependent activation of JUN/AP-1, TRIF-dependent activation of NF-kappa-B and IRF3, and the phosphorylation of MAPK14/p38 (PMID: 16964262).

Storage

Storage:
Store at -80°C.

Storage Buffer:
PBS only, pH7.3

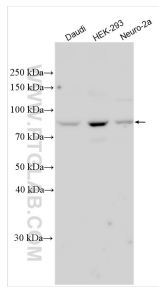
For technical support and original validation data for this product please contact:

T: 1 (888) 4PTGLAB (1-888-478-4522) (toll free
in USA), or 1(312) 455-8498 (outside USA)

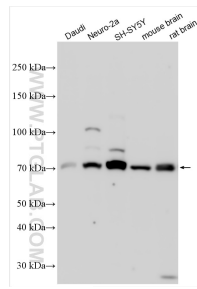
E: proteintech@ptglab.com
W: ptglab.com

This product is exclusively available under Proteintech Group brand and is not available to purchase from any other manufacturer.

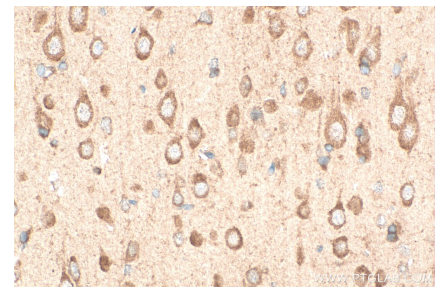
Selected Validation Data



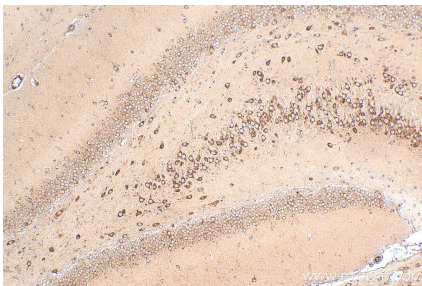
Various lysates were subjected to SDS PAGE followed by western blot with 28625-1-AP (SARM1 antibody) at dilution of 1:1500 incubated at room temperature for 1.5 hours. This data was developed using the same antibody clone with 28625-1-PBS in a different storage buffer formulation.



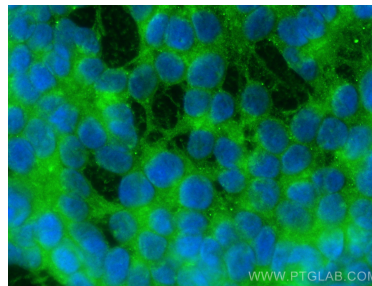
Various lysates were subjected to SDS PAGE followed by western blot with 28625-1-AP (SARM1 antibody) at dilution of 1:2000 incubated at room temperature for 1.5 hours. This data was developed using the same antibody clone with 28625-1-PBS in a different storage buffer formulation.



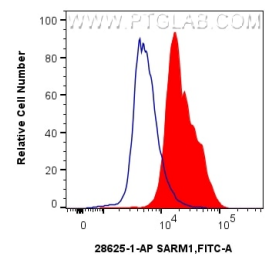
Immunohistochemical analysis of paraffin-embedded rat brain tissue slide using 28625-1-AP (SARM1 antibody) at dilution of 1:400 (under 40x lens). Heat mediated antigen retrieval with Tris-EDTA buffer (pH 9.0). This data was developed using the same antibody clone with 28625-1-PBS in a different storage buffer formulation.



Immunohistochemical analysis of paraffin-embedded rat brain tissue slide using 28625-1-AP (SARM1 antibody) at dilution of 1:400 (under 10x lens). Heat mediated antigen retrieval with Tris-EDTA buffer (pH 9.0). This data was developed using the same antibody clone with 28625-1-PBS in a different storage buffer formulation.



Immunofluorescent analysis of (-20°C Ethanol) fixed SH-SY5Y cells using SARM1 antibody (28625-1-AP) at dilution of 1:400 and CoraLite®488-Conjugated AffiniPure Goat Anti-Rabbit IgG(H+L) (SA00013-2). This data was developed using the same antibody clone with 28625-1-PBS in a different storage buffer formulation.



1×10^6 SH-SY5Y cells were intracellularly stained with 0.25 ug SARM1 Polyclonal antibody (28625-1-AP) and CoraLite®488-Conjugated Goat Anti-Rabbit IgG(H+L) (SA00013-2)(red), or 0.25 ug Isotype Control (blue). Cells were fixed with 4% PFA and permeabilized with Flow Cytometry Perm Buffer (PF00017). This data was developed using the same antibody clone with 28625-1-PBS in a different storage buffer formulation.