

For Research Use Only

ORAI1 Polyclonal antibody

Catalog Number: 28637-1-AP



Basic Information

Catalog Number:

28637-1-AP

Size:

150ul, Concentration: 500 ug/ml by Nanodrop;

Source:

Rabbit

Isotype:

IgG

Immunogen Catalog Number:

AG29779

GenBank Accession Number:

BC015369

GeneID (NCBI):

84876

UNIPROT ID:

Q96D31

Full Name:

ORAI calcium release-activated calcium modulator 1

Calculated MW:

301 aa, 33 kDa

Observed MW:

32 kDa, 45-50 kDa

Purification Method:

Antigen affinity purification

Recommended Dilutions:

WB 1:500-1:3000

Applications

Tested Applications:

WB, ELISA

Species Specificity:

Human

Positive Controls:

WB : A549 cells, A375 cells

Background Information

Store-operated calcium channels (SOCs) play essential functions in various physiological processes. ORAI1 is a complex glycosylated protein, it exists in several molecular weight forms: a theoretical molecular weight of 32.7 kDa of the unmodified protein and two major glycosylated proteins of ~43 kDa and ~50 kDa (PMID: 22318387). Human patients with a severe combined immunodeficiency (SCID) syndrome possess point mutations in Orai1 gene.

Storage

Storage:

Store at -20°C. Stable for one year after shipment.

Storage Buffer:

PBS with 0.02% sodium azide and 50% glycerol pH 7.3.

Aliquoting is unnecessary for -20°C storage

*** 20ul sizes contain 0.1% BSA

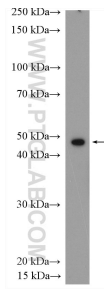
For technical support and original validation data for this product please contact:

T: 1 (888) 4PTGLAB (1-888-478-4522) (toll free in USA), or 1(312) 455-8498 (outside USA)

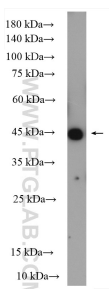
E: proteintech@ptglab.com
W: ptglab.com

This product is exclusively available under Proteintech Group brand and is not available to purchase from any other manufacturer.

Selected Validation Data



A375 cells were subjected to SDS PAGE followed by western blot with 28637-1-AP (ORAI1 antibody) at dilution of 1:2000 incubated at room temperature for 1.5 hours.



A549 cells were subjected to SDS PAGE followed by western blot with 28637-1-AP (ORAI1 antibody) at dilution of 1:1500 incubated at room temperature for 1.5 hours.