

For Research Use Only

SLC5A11 Polyclonal antibody

Catalog Number: 28648-1-AP



Basic Information

Catalog Number:

28648-1-AP

Size:

150ul, Concentration: 600 ug/ml by Nanodrop;

Source:

Rabbit

Isotype:

IgG

Immunogen Catalog Number:

AG29916

GenBank Accession Number:

BC057780

GeneID (NCBI):

115584

UNIPROT ID:

Q8WWX8

Full Name:

solute carrier family 5 (sodium/glucose cotransporter), member 11

Calculated MW:

611 aa, 67 kDa

Observed MW:

70-74 kDa

Purification Method:

Antigen affinity purification

Recommended Dilutions:

WB: 1:1000-1:4000

IHC: 1:50-1:500

IF-P: 1:50-1:500

IF/ICC: 1:200-1:800

Applications

Tested Applications:

WB, IHC, IF/ICC, IF-P, ELISA

Species Specificity:

human, mouse, rat

Note-IHC: suggested antigen retrieval with TE buffer pH 9.0; (*) Alternatively, antigen retrieval may be performed with citrate buffer pH 6.0

Positive Controls:

WB: mouse kidney tissue, rat kidney tissue

IHC: human kidney tissue,

IF-P: mouse small intestine tissue,

IF/ICC: HepG2 cells,

Background Information

SLC5A11 (Sodium/myo-inositol cotransporter 2), also known as KST1, SMT2, is a sodium/solute cotransporter-like neuronal protein. In Drosophila, SLC5A11 mediates hunger by regulating potassium channel activity. SLC5A11 has been linked to infantile convulsions and paroxysmal dyskinesia (ICCA syndrome) and benign familial infantile convulsions (BFIC) (PMID: 27397890).

Storage

Storage:

Store at -20°C. Stable for one year after shipment.

Storage Buffer:

PBS with 0.02% sodium azide and 50% glycerol, pH7.3

Aliquoting is unnecessary for -20°C storage

*** 20ul sizes contain 0.1% BSA

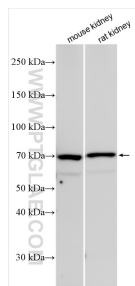
For technical support and original validation data for this product please contact:

T: 1 (888) 4PTGLAB (1-888-478-4522) (toll free in USA), or 1(312) 455-8498 (outside USA)

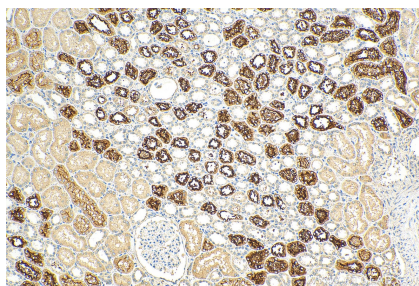
E: proteintech@ptglab.com
W: ptglab.com

This product is exclusively available under Proteintech Group brand and is not available to purchase from any other manufacturer.

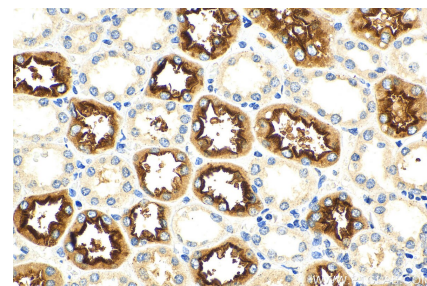
Selected Validation Data



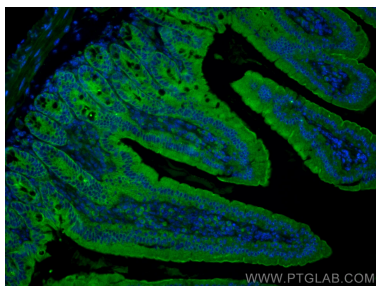
Various lysates were subjected to SDS PAGE followed by western blot with 28648-1-AP (SLC5A11 antibody) at dilution of 1:2000 incubated at room temperature for 1.5 hours.



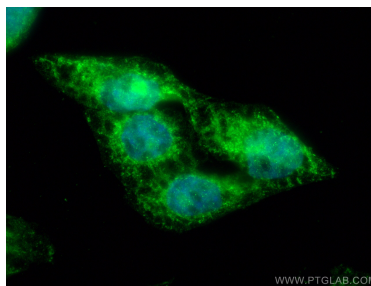
Immunohistochemical analysis of paraffin-embedded human kidney tissue slide using 28648-1-AP (SLC5A11 antibody) at dilution of 1:200 (under 10x lens). Heat mediated antigen retrieval with Tris-EDTA buffer (pH 9.0).



Immunohistochemical analysis of paraffin-embedded human kidney tissue slide using 28648-1-AP (SLC5A11 antibody) at dilution of 1:200 (under 40x lens). Heat mediated antigen retrieval with Tris-EDTA buffer (pH 9.0).



Immunofluorescent analysis of (4% PFA) fixed paraffin-embedded mouse small intestine tissue using SLC5A11 antibody (28648-1-AP) at dilution of 1:200 and CoraLite®488-Conjugated Goat Anti-Rabbit IgG(H+L) (SA00013-2). Heat mediated antigen retrieval with Tris-EDTA buffer (pH 9.0).



Immunofluorescent analysis of (4% PFA) fixed HepG2 cells using SLC5A11 antibody (28648-1-AP) at dilution of 1:400 and CoraLite®488-Conjugated AffiniPure Goat Anti-Rabbit IgG(H+L).