

For Research Use Only

WWP1 Polyclonal antibody

Catalog Number: 28689-1-AP

3 Publications



Basic Information

Catalog Number:

28689-1-AP

Size:

150ul, Concentration: 400 ug/ml by Nanodrop and 267 ug/ml by Bradford method using BSA as the standard;

Source:

Rabbit

Isotype:

IgG

Immunogen Catalog Number:

AG30161

GenBank Accession Number:

BC036065

GeneID (NCBI):

11059

UNIPROT ID:

Q9H0M0

Full Name:

WW domain containing E3 ubiquitin protein ligase 1

Calculated MW:

922 aa, 105 kDa

Observed MW:

95-105 kDa

Purification Method:

Antigen affinity purification

Recommended Dilutions:

WB 1:500-1:1000

IHC 1:50-1:500

Applications

Tested Applications:

WB, IHC, ELISA

Cited Applications:

WB, IHC

Species Specificity:

Human

Cited Species:

human

Note-IHC: suggested antigen retrieval with TE buffer pH 9.0; (*) Alternatively, antigen retrieval may be performed with citrate buffer pH 6.0

Positive Controls:

WB : HepG2 cells, HeLa cells, MCF-7 cells, A431 cells

IHC : human breast cancer tissue, human liver cancer tissue

Background Information

WW domain-containing E3 ubiquitin protein ligase 1 (WWP1) is a multifunction protein containing an N-terminal C2 domain, four tandem WW domains for substrate binding, and a C-terminal catalytic HECT domain for ubiquitin transferring. It is also named as AIP5, Tiul1. WWP1 regulates a variety of cellular biological processes including protein trafficking and degradation, signaling, transcription, and viral budding. WWP1 has been implicated in several diseases, such as cancers, infectious diseases, neurological diseases, and aging (PMID:22051607). It has 6 isoforms produced by alternative splicing.

Notable Publications

Author	Pubmed ID	Journal	Application
Wei Jin	38997648	Cell Mol Biol Lett	WB, IHC
Chunlong Huang	38457248	Cancer Med	WB

Storage

Storage:

Store at -20°C. Stable for one year after shipment.

Storage Buffer:

PBS with 0.02% sodium azide and 50% glycerol pH 7.3.

Aliquoting is unnecessary for -20°C storage

*** 20ul sizes contain 0.1% BSA

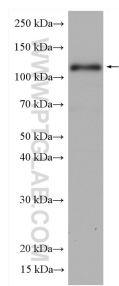
For technical support and original validation data for this product please contact:

T: 1 (888) 4PTGLAB (1-888-478-4522) (toll free in USA), or 1(312) 455-8498 (outside USA)

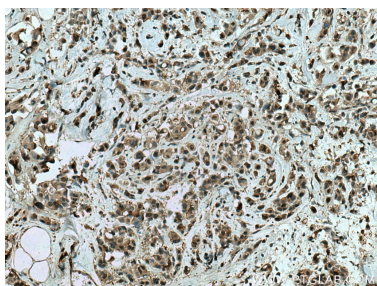
E: proteintech@ptglab.com
W: ptglab.com

This product is exclusively available under Proteintech Group brand and is not available to purchase from any other manufacturer.

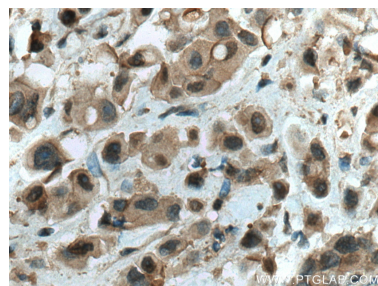
Selected Validation Data



HepG2 cells were subjected to SDS PAGE followed by western blot with 28689-1-AP (WWP1 antibody) at dilution of 1:800 incubated at room temperature for 1.5 hours.



Immunohistochemical analysis of paraffin-embedded human breast cancer tissue slide using 28689-1-AP (WWP1 antibody) at dilution of 1:200 (under 10x lens). Heat mediated antigen retrieval with Tris-EDTA buffer (pH 9.0).



Immunohistochemical analysis of paraffin-embedded human breast cancer tissue slide using 28689-1-AP (WWP1 antibody) at dilution of 1:200 (under 40x lens). Heat mediated antigen retrieval with Tris-EDTA buffer (pH 9.0).