

For Research Use Only

SETD3 Polyclonal antibody

Catalog Number: 28692-1-AP



Basic Information

Catalog Number: 28692-1-AP	GenBank Accession Number: NM_032233	Purification Method: Antigen affinity purification
Size: 150ul , Concentration: 700 µg/ml by Nanodrop;	GeneID (NCBI): 84193	Recommended Dilutions: WB 1:1000-1:8000 IHC 1:50-1:500
Source: Rabbit	Full Name: SET domain containing 3	
Isotype: IgG	Calculated MW: 67 kDa	
Immunogen Catalog Number: AG30017	Observed MW: 67 kDa	

Applications

Tested Applications: IHC, WB, ELISA	Positive Controls: WB : MCF-7 cells, IHC : mouse small intestine tissue, mouse liver tissue
Species Specificity: Human	

Note-IHC: suggested antigen retrieval with TE buffer pH 9.0; (*) Alternatively, antigen retrieval may be performed with citrate buffer pH 6.0

Background Information

SETD3 (SET domain protein 3), a ubiquitously expressed protein, is epigenetically up-regulated in response to muscle loading and hypertrophy. The SETD3 mRNA is ubiquitously expressed at a similar basal level in most examined tissues, with the noticeable exception of the skeletal muscle, kidneys, and testes (PMID: 34685411). SETD3 deficient female mice have severely decreased litter sizes due to primary maternal dystocia that is refractory to ecbolic induction agents (PMID: 30626964).

Storage

Storage:
Store at -20°C. Stable for one year after shipment.
Storage Buffer:
PBS with 0.02% sodium azide and 50% glycerol pH 7.3.
Aliquoting is unnecessary for -20°C storage

*** 20ul sizes contain 0.1% BSA

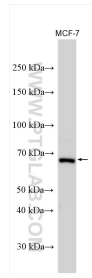
For technical support and original validation data for this product please contact:

T: 1 (888) 4PTGLAB (1-888-478-4522) (toll free in USA), or 1(312) 455-8498 (outside USA)

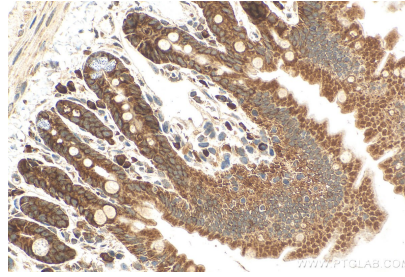
E: proteintech@ptglab.com
W: ptglab.com

This product is exclusively available under Proteintech Group brand and is not available to purchase from any other manufacturer.

Selected Validation Data



MCF-7 cells were subjected to SDS PAGE followed by western blot with 28692-1-AP (SETD3 antibody) at dilution of 1:4000 incubated at room temperature for 1.5 hours.



Immunohistochemical analysis of paraffin-embedded mouse small intestine tissue slide using 28692-1-AP (SETD3 antibody) at dilution of 1:200 (under 40x lens). Heat mediated antigen retrieval with Tris-EDTA buffer (pH 9.0).