

For Research Use Only

# SEC62 Polyclonal antibody

Catalog Number: 28693-1-AP

1 Publications



## Basic Information

<b>Catalog Number:</b> 28693-1-AP	<b>GenBank Accession Number:</b> NM_003262	<b>Purification Method:</b> Antigen affinity purification
<b>Size:</b> 150ul , Concentration: 600 ug/ml by Nanodrop;	<b>GeneID (NCBI):</b> 7095	<b>Recommended Dilutions:</b> WB 1:1000-1:6000 IF/ICC 1:200-1:800
<b>Source:</b> Rabbit	<b>UNIPROT ID:</b> Q99442	
<b>Isotype:</b> IgG	<b>Full Name:</b> SEC62 homolog (S. cerevisiae)	
<b>Immunogen Catalog Number:</b> AG29932	<b>Calculated MW:</b> 46 kDa	
	<b>Observed MW:</b> 52 kDa	

## Applications

<b>Tested Applications:</b> WB, IF/ICC, ELISA	<b>Positive Controls:</b> WB : HT-29 cells, SW480 cells
<b>Cited Applications:</b> WB	<b>IF/ICC :</b> HepG2 cells,
<b>Species Specificity:</b> human	
<b>Cited Species:</b> human	

## Background Information

SEC62 is a integral endoplasmic reticulum (ER) membrane protein. SEC62 and SEC63 form a dimeric complex and play a central role in translocation of nascent and newly synthesized precursor polypeptides into the ER. SEC62 is associated with poor prognosis in a variety of tumors, such as prostate cancer, hepatocellular cancer, breast cancer, melanoma, colorectal cancer (PMID: 36262254).

## Notable Publications

Author	Pubmed ID	Journal	Application
Xing He	39284914	EMBO J	WB

## Storage

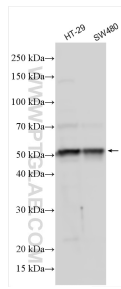
**Storage:**  
Store at -20°C. Stable for one year after shipment.  
**Storage Buffer:**  
PBS with 0.02% sodium azide and 50% glycerol pH 7.3.  
**Aliquoting is unnecessary for -20°C storage**

\*\*\* 20ul sizes contain 0.1% BSA

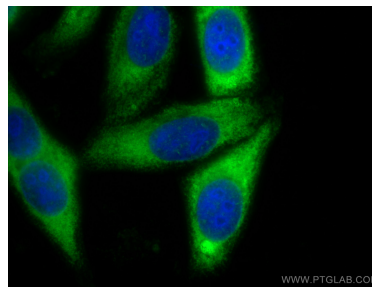
For technical support and original validation data for this product please contact:  
T: 1 (888) 4PTGLAB (1-888-478-4522) (toll free in USA), or 1(312) 455-8498 (outside USA)  
E: [proteintech@ptglab.com](mailto:proteintech@ptglab.com)  
W: [ptglab.com](http://ptglab.com)

This product is exclusively available under Proteintech Group brand and is not available to purchase from any other manufacturer.

## Selected Validation Data



Various lysates were subjected to SDS PAGE followed by western blot with 28693-1-AP (SEC62 antibody) at dilution of 1:3000 incubated at room temperature for 1.5 hours.



Immunofluorescent analysis of (-20°C Ethanol) fixed HepG2 cells using SEC62 antibody (28693-1-AP) at dilution of 1:400 and Multi-rAb CoraLite® Plus 488-Goat Anti-Rabbit Recombinant Secondary Antibody (H+L) (RGAR002).