

For Research Use Only

# SEC62 Polyclonal antibody, PBS Only

Catalog Number: 28693-1-PBS



## Basic Information

<b>Catalog Number:</b> 28693-1-PBS	<b>GenBank Accession Number:</b> NM_003262	<b>Purification Method:</b> Antigen affinity purification
<b>Size:</b> 100ug, Concentration: 1 mg/ml by Nanodrop;	<b>GeneID (NCBI):</b> 7095	
<b>Source:</b> Rabbit	<b>UNIPROT ID:</b> Q99442	
<b>Isotype:</b> IgG	<b>Full Name:</b> SEC62 homolog (S. cerevisiae)	
<b>Immunogen Catalog Number:</b> AG29932	<b>Calculated MW:</b> 46 kDa	
	<b>Observed MW:</b> 52 kDa	

## Applications

**Tested Applications:**  
WB, IHC, IF/ICC, Indirect ELISA

**Species Specificity:**  
human

## Background Information

SEC62 is an integral endoplasmic reticulum (ER) membrane protein. SEC62 and SEC63 form a dimeric complex and play a central role in translocation of nascent and newly synthesized precursor polypeptides into the ER. SEC62 is associated with poor prognosis in a variety of tumors, such as prostate cancer, hepatocellular cancer, breast cancer, melanoma, colorectal cancer (PMID: 36262254).

## Storage

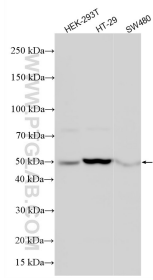
**Storage:**  
Store at -80°C.

**Storage Buffer:**  
PBS only, pH7.3

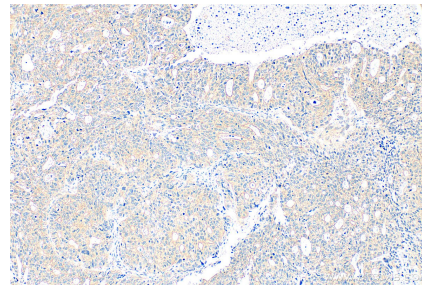
For technical support and original validation data for this product please contact:  
T: 1 (888) 4PTGLAB (1-888-478-4522) (toll free in USA), or 1(312) 455-8498 (outside USA)      E: proteintech@ptglab.com  
W: ptglab.com

This product is exclusively available under Proteintech Group brand and is not available to purchase from any other manufacturer.

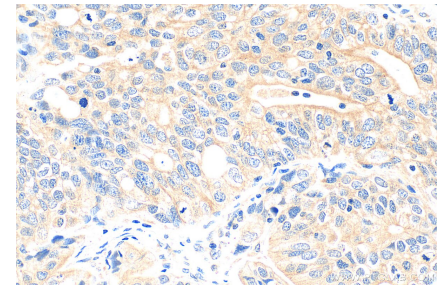
## Selected Validation Data



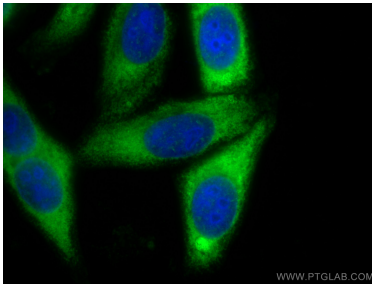
Various lysates were subjected to SDS PAGE followed by western blot with 28693-1-AP (SEC62 antibody) at dilution of 1:8000 incubated at room temperature for 1.5 hours. This data was developed using the same antibody clone with 28693-1-PBS in a different storage buffer formulation.



Immunohistochemical analysis of paraffin-embedded human ovary tumor tissue slide using 28693-1-AP (SEC62 antibody) at dilution of 1:200 (under 10x lens). Heat mediated antigen retrieval with Tris-EDTA buffer (pH 9.0). This data was developed using the same antibody clone with 28693-1-PBS in a different storage buffer formulation.



Immunohistochemical analysis of paraffin-embedded human ovary tumor tissue slide using 28693-1-AP (SEC62 antibody) at dilution of 1:200 (under 40x lens). Heat mediated antigen retrieval with Tris-EDTA buffer (pH 9.0). This data was developed using the same antibody clone with 28693-1-PBS in a different storage buffer formulation.



Immunofluorescent analysis of (-20°C Ethanol) fixed HepG2 cells using SEC62 antibody (28693-1-AP) at dilution of 1:400 and Multi-rAb CoraLite® Plus 488-Goat Anti-Rabbit Recombinant Secondary Antibody (H+L) (RGAR002). This data was developed using the same antibody clone with 28693-1-PBS in a different storage buffer formulation.