

For Research Use Only

KNL1 Polyclonal antibody

Catalog Number: 28695-1-AP



Basic Information

Catalog Number: 28695-1-AP	GenBank Accession Number: NM_170589	Purification Method: Antigen affinity purification
Size: 150ul , Concentration: 450 ug/ml by Nanodrop;	GeneID (NCBI): 57082	Recommended Dilutions: WB 1:1000-1:8000 IF/ICC 1:50-1:500
Source: Rabbit	UNIPROT ID: Q8NG31	
Isotype: IgG	Full Name: cancer susceptibility candidate 5	
Immunogen Catalog Number: AG29881	Calculated MW: 265 kDa	
	Observed MW: 300 kDa	

Applications

Tested Applications: WB, IF/ICC, ELISA	Positive Controls:
Species Specificity: human	WB : HEK-293 cells, HeLa cells IF/ICC : U2OS cells,

Background Information

KNL1 is a component of the multiprotein assembly that is required for creation of kinetochore-microtubule attachments and chromosome segregation. KNL1 functions as a scaffold for proteins that influence the spindle assembly checkpoint during the eukaryotic cell cycle and it interacts with at least five different kinetochore proteins and two checkpoint kinases. In adults, this gene is predominantly expressed in normal testes, various cancer cell lines and primary tumors from other tissues and is ubiquitously expressed in fetal tissues.

Storage

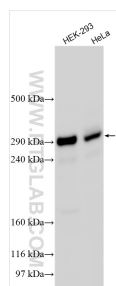
Storage:
Store at -20°C. Stable for one year after shipment.
Storage Buffer:
PBS with 0.02% sodium azide and 50% glycerol pH 7.3.
Aliquoting is unnecessary for -20°C storage

*** 20ul sizes contain 0.1% BSA

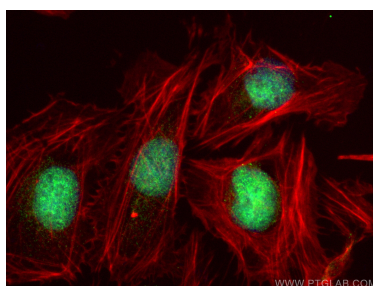
For technical support and original validation data for this product please contact:
T: 1 (888) 4PTGLAB (1-888-478-4522) (toll free in USA), or 1(312) 455-8498 (outside USA)
E: proteintech@ptglab.com
W: ptglab.com

This product is exclusively available under Proteintech Group brand and is not available to purchase from any other manufacturer.

Selected Validation Data



Various lysates were subjected to SDS PAGE followed by western blot with 28695-1-AP (KNL1 antibody) at dilution of 1:4000 incubated at room temperature for 1.5 hours.



Immunofluorescent analysis of (4% PFA) fixed U2OS cells using KNL1 antibody (28695-1-AP) at dilution of 1:200 and CoraLite®488-Conjugated AffiniPure Goat Anti-Rabbit IgG(H+L) (SA00013-2), CL594-Phalloidin (red).