

For Research Use Only

# LAMA1 Polyclonal antibody

Catalog Number: 28697-1-AP



## Basic Information

### Catalog Number:

28697-1-AP

### Size:

150ul , Concentration: 350 ug/ml by Nanodrop;

### Source:

Rabbit

### Isotype:

IgG

### Immunogen Catalog Number:

AG29329

### GenBank Accession Number:

NM\_005559

### GeneID (NCBI):

284217

### UNIPROT ID:

P25391

### Full Name:

laminin, alpha 1

### Calculated MW:

337 kDa

### Observed MW:

337 kDa

### Purification Method:

Antigen affinity purification

### Recommended Dilutions:

WB 1:200-1:1000

IF-P 1:200-1:800

## Applications

### Tested Applications:

WB, IF-P, ELISA

### Species Specificity:

human, rat

### Positive Controls:

WB : HeLa cells, U2OS cells

IF-P : rat colon tissue,

## Background Information

LAMA1 is also known as laminin subunit  $\alpha 1$ . Laminins are a family of glycoproteins found in the extracellular matrix that comprises the basement membrane. Laminins have a heterotrimeric structure composed of an  $\alpha$ ,  $\beta$ , and  $\gamma$  chain. Numerous biological processes are known to be directed by them, including cell adhesion, mitogenesis, differentiation, and metastasis, all of which contribute to carcinogenesis. Tissue distribution of LAMA1 occurred mainly in early epithelial development and some adult epithelia. Recent reports have shown that laminin-1 acts as an efficient attachment protein for a large variety of cultured cell types in vitro. (PMID: 36824663)

## Storage

### Storage:

Store at  $-20^{\circ}\text{C}$ . Stable for one year after shipment.

### Storage Buffer:

PBS with 0.02% sodium azide and 50% glycerol pH 7.3.

Aliquoting is unnecessary for  $-20^{\circ}\text{C}$  storage

\*\*\* 20ul sizes contain 0.1% BSA

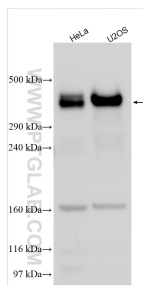
For technical support and original validation data for this product please contact:

T: 1 (888) 4PTGLAB (1-888-478-4522) (toll free in USA), or 1(312) 455-8498 (outside USA)

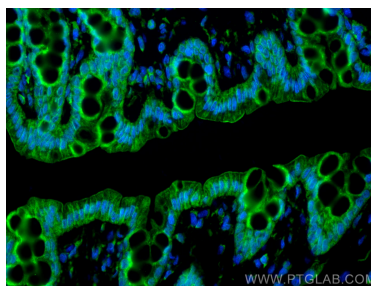
E: [proteintech@ptglab.com](mailto:proteintech@ptglab.com)  
W: [ptglab.com](http://ptglab.com)

This product is exclusively available under Proteintech Group brand and is not available to purchase from any other manufacturer.

## Selected Validation Data



Various lysates were subjected to SDS PAGE followed by western blot with 28697-1-AP (LAMA1 antibody) at dilution of 1:300 incubated at room temperature for 1.5 hours.



Immunofluorescent analysis of (4% PFA) fixed paraffin-embedded rat colon tissue using LAMA1 antibody (28697-1-AP) at dilution of 1:400 and CoraLite®488-Conjugated Goat Anti-Rabbit IgG(H+L) (SA00013-2). Heat mediated antigen retrieval with Tris-EDTA buffer (pH 9.0).