

For Research Use Only

LAMA1 Polyclonal antibody, PBS Only

Catalog Number: 28697-1-PBS



Basic Information

Catalog Number: 28697-1-PBS	GenBank Accession Number: NM_005559	Purification Method: Antigen affinity purification
Size: 100ug , Concentration: 1 mg/ml by Nanodrop;	GeneID (NCBI): 284217	
Source: Rabbit	UNIPROT ID: P25391	
Isotype: IgG	Full Name: laminin, alpha 1	
Immunogen Catalog Number: AG29329	Calculated MW: 337 kDa	
	Observed MW: 337 kDa	

Applications

Tested Applications:
WB, IF-P, Indirect ELISA

Species Specificity:
human, rat

Background Information

LAMA1 is also known as laminin subunit $\alpha 1$. Laminins are a family of glycoproteins found in the extracellular matrix that comprises the basement membrane. Laminins have a heterotrimeric structure composed of an α , β , and γ chain. Numerous biological processes are known to be directed by them, including cell adhesion, mitogenesis, differentiation, and metastasis, all of which contribute to carcinogenesis. Tissue distribution of LAMA1 occurred mainly in early epithelial development and some adult epithelia. Recent reports have shown that laminin-1 acts as an efficient attachment protein for a large variety of cultured cell types in vitro. (PMID: 36824663)

Storage

Storage:
Store at -80°C .

Storage Buffer:
PBS only, pH7.3

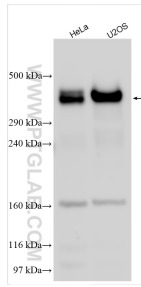
For technical support and original validation data for this product please contact:

T: 1 (888) 4PTGLAB (1-888-478-4522) (toll free in USA), or 1(312) 455-8498 (outside USA)

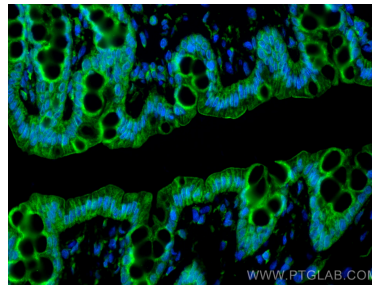
E: proteintech@ptglab.com
W: ptglab.com

This product is exclusively available under Proteintech Group brand and is not available to purchase from any other manufacturer.

Selected Validation Data



Various lysates were subjected to Tris-Acetate gel system followed by western blot with 28697-1-AP (LAMA1 antibody) at dilution of 1:300 incubated at room temperature for 1.5 hours. This data was developed using the same antibody clone with 28697-1-PBS in a different storage buffer formulation.



Immunofluorescent analysis of (4% PFA) fixed paraffin-embedded rat colon tissue using LAMA1 antibody (28697-1-AP) at dilution of 1:400 and CoraLite®488-Conjugated Goat Anti-Rabbit IgG(H+L) (SA00013-2). Heat mediated antigen retrieval with Tris-EDTA buffer (pH 9.0). This data was developed using the same antibody clone with 28697-1-PBS in a different storage buffer formulation.