

For Research Use Only

CEP192 Polyclonal antibody

Catalog Number: 28700-1-AP



Basic Information

Catalog Number: 28700-1-AP	GenBank Accession Number: NM_032142	Purification Method: Antigen affinity purification
Size: 150ul , Concentration: 1000 ug/ml by Nanodrop;	GeneID (NCBI): 55125	Recommended Dilutions: WB 1:1000-1:8000 IF/ICC 1:50-1:500
Source: Rabbit	UNIPROT ID: Q8TEP8	
Isotype: IgG	Full Name: centrosomal protein 192kDa	
Immunogen Catalog Number: AG29930	Calculated MW: 297 kDa	
	Observed MW: 280-300 kDa	

Applications

Tested Applications: WB, IF/ICC, ELISA	Positive Controls:
Species Specificity: Human	WB : HEK-293 cells, HeLa cells IF/ICC : HeLa cells,

Background Information

CEP192, also named PP8407 and KIAA1569, interacts with SHBG. It is required for mitotic centrosome and spindle assembly. CEP192 appears to be a major regulator of pericentriolar material (PCM) recruitment, centrosome maturation, and centriole duplication.

Storage

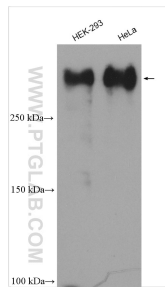
Storage:
Store at -20°C. Stable for one year after shipment.
Storage Buffer:
PBS with 0.02% sodium azide and 50% glycerol pH 7.3.
Aliquoting is unnecessary for -20°C storage

*** 20ul sizes contain 0.1% BSA

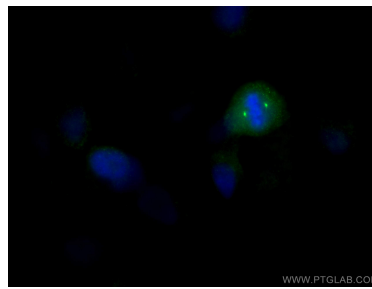
For technical support and original validation data for this product please contact:
T: 1 (888) 4PTGLAB (1-888-478-4522) (toll free in USA), or 1(312) 455-8498 (outside USA)
E: proteintech@ptglab.com
W: ptglab.com

This product is exclusively available under Proteintech Group brand and is not available to purchase from any other manufacturer.

Selected Validation Data



Various lysates were subjected to SDS PAGE followed by western blot with 28700-1-AP (CEP192 antibody) at dilution of 1:4000 incubated at room temperature for 1.5 hours.



Immunofluorescent analysis of (4% PFA) fixed HeLa cells using 28700-1-AP (CEP192 antibody), at dilution of 1:200 and CoraLite®488-Conjugated Goat Anti-Rabbit IgG(H+L).