

For Research Use Only

METAP1 Polyclonal antibody, PBS Only

Catalog Number: 28702-1-PBS



Basic Information

Catalog Number: 28702-1-PBS	GenBank Accession Number: NM_015143	Purification Method: Antigen affinity purification
Size: 100ug , Concentration: 1 mg/ml by Nanodrop;	GeneID (NCBI): 23173	
Source: Rabbit	UNIPROT ID: P53582	
Isotype: IgG	Full Name: methionyl aminopeptidase 1	
Immunogen Catalog Number: AG29828	Calculated MW: 43 kDa	
	Observed MW: 40-43 kDa	

Applications

Tested Applications:
WB, IHC, IF/ICC, Indirect ELISA

Species Specificity:
human

Background Information

METAP1 (methionyl aminopeptidase 1), also known as MAP1A or MetAP1A, is expected to be located in cytosol and widely expressed in esophagus and testis. The calculated molecular weight of METAP1 is 43 kDa. METAP1 is expected to have aminopeptidase activity and metallo-exopeptidase activity. It is also involved in platelet aggregation. At the same time, HsMetAP1 participates in co-translation to remove N- terminal methionine from newborn protein. Studies have shown that when HsMetAP1 is knocked down by gene-specific siRNA, cells show slow progress in G(2)/M phase, which is similar to cells treated with MetAP1 inhibitors. Importantly, MetAP1 inhibitors can induce apoptosis of leukemia cell lines, which may be the result of their interference with G(2)/M checkpoint. Therefore, it is necessary for normal cell cycle, especially in G(2)/M phase of cell cycle, and it can be used as a promising target for discovering and developing new anticancer drugs (PMID: 17114291).

Storage

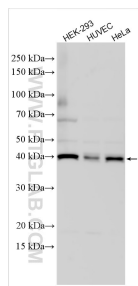
Storage:
Store at -80°C.

Storage Buffer:
PBS Only

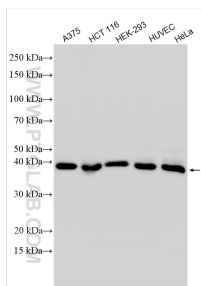
For technical support and original validation data for this product please contact:
T: 1 (888) 4PTGLAB (1-888-478-4522) (toll free in USA), or 1(312) 455-8498 (outside USA)
E: proteintech@ptglab.com
W: ptglab.com

This product is exclusively available under Proteintech Group brand and is not available to purchase from any other manufacturer.

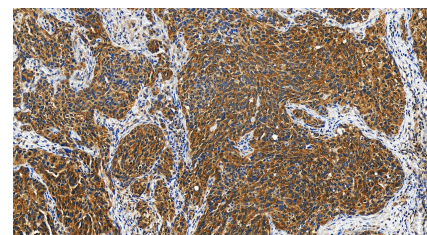
Selected Validation Data



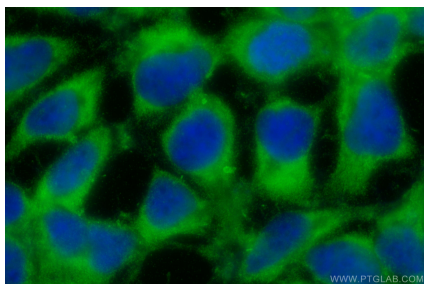
Various lysates were subjected to SDS PAGE followed by western blot with 28702-1-AP (METAP1 antibody) at dilution of 1:4000 incubated at room temperature for 1.5 hours. This data was developed using the same antibody clone with 28702-1-PBS in a different storage buffer formulation.



Various lysates were subjected to SDS PAGE followed by western blot with 28702-1-AP (METAP1 antibody) at dilution of 1:5000 incubated at room temperature for 1.5 hours. This data was developed using the same antibody clone with 28702-1-PBS in a different storage buffer formulation.



Immunohistochemical analysis of paraffin-embedded human ovary cancer tissue slide using 28702-1-AP (METAP1 antibody) at dilution of 1:1000 (under 20x lens). Heat mediated antigen retrieval with Tris-EDTA buffer (pH 9.0). This data was developed using the same antibody clone with 28702-1-PBS in a different storage buffer formulation.



Immunofluorescent analysis of (-20°C Ethanol) fixed HEK-293 cells using METAP1 antibody (28702-1-AP) at dilution of 1:400 and CoraLite®488-Conjugated AffiniPure Goat Anti-Rabbit IgG(H+L). This data was developed using the same antibody clone with 28702-1-PBS in a different storage buffer formulation.