

For Research Use Only

KCC2/SLC12A5 Polyclonal antibody

Catalog Number: 28724-1-AP



Basic Information

Catalog Number: 28724-1-AP	GenBank Accession Number: BC132670	Purification Method: Antigen affinity purification
Size: 150ul , Concentration: 600 µg/ml by Nanodrop;	GeneID (NCBI): 57468	Recommended Dilutions: WB 1:1000-1:6000 IHC 1:500-1:2000 IF 1:50-1:500
Source: Rabbit	Full Name: solute carrier family 12 (potassium-chloride transporter), member 5	
Isotype: IgG	Observed MW: 130-150 kDa	
Immunogen Catalog Number: AG30203		

Applications

Tested Applications: IF, IHC, WB, ELISA	Positive Controls:
Species Specificity: Human, Mouse, Rat	WB : mouse brain tissue,
Note-IHC: suggested antigen retrieval with TE buffer pH 9.0; (*) Alternatively, antigen retrieval may be performed with citrate buffer pH 6.0	IHC : rat brain tissue, mouse brain tissue
	IF : mouse cerebellum tissue,

Background Information

KCC2, encoded by SLC12A5, is a neuron-specific K⁺-Cl⁻ cotransporter that is essential for Cl⁻ homeostasis and inhibitory synaptic transmission in brain. KCC2 is expressed at high levels in neurons throughout the nervous system. KCC2 deletion caused animal death. Alterations of KCC2 have been linked to neuropathic pain, temporal lobe epilepsy, and other diseases.

Storage

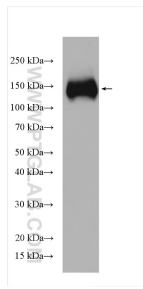
Storage:
Store at -20°C. Stable for one year after shipment.
Storage Buffer:
PBS with 0.02% sodium azide and 50% glycerol pH 7.3.
Aliquoting is unnecessary for -20°C storage

*** 20ul sizes contain 0.1% BSA

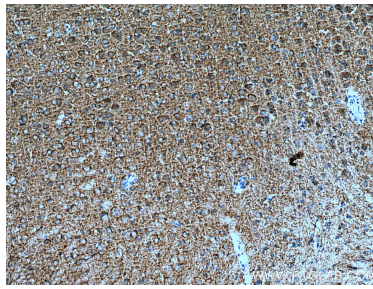
For technical support and original validation data for this product please contact:
T: 1 (888) 4PTGLAB (1-888-478-4522) (toll free in USA), or 1(312) 455-8498 (outside USA)
E: proteintech@ptglab.com
W: ptglab.com

This product is exclusively available under Proteintech Group brand and is not available to purchase from any other manufacturer.

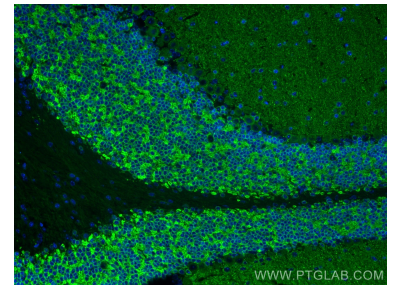
Selected Validation Data



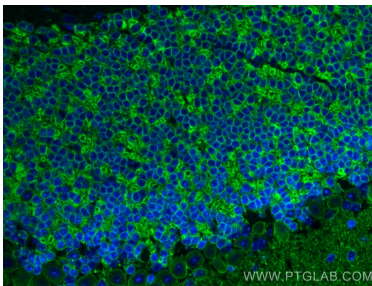
mouse brain tissue were subjected to SDS PAGE followed by western blot with 28724-1-AP (KCC2 antibody) at dilution of 1:3000 incubated at room temperature for 1.5 hours.



Immunohistochemical analysis of paraffin-embedded rat brain tissue slide using 28724-1-AP (KCC2 antibody) at dilution of 1:1000 (under 10x lens). Heat mediated antigen retrieval with Tris-EDTA buffer (pH 9.0).



Immunofluorescent analysis of (4% PFA) fixed mouse cerebellum tissue using KCC2/SLC12A5 antibody (28724-1-AP) at dilution of 1:200 and CoraLite®488-Conjugated AffiniPure Goat Anti-Rabbit IgG(H+L).



Immunofluorescent analysis of (4% PFA) fixed mouse cerebellum tissue using KCC2/SLC12A5 antibody (28724-1-AP) at dilution of 1:200 and CoraLite®488-Conjugated AffiniPure Goat Anti-Rabbit IgG(H+L).