

For Research Use Only

# ESAM Polyclonal antibody

Catalog Number: 28739-1-AP



## Basic Information

### Catalog Number:

28739-1-AP

### Size:

150ul , Concentration: 600 ug/ml by Nanodrop and 333 ug/ml by Bradford method using BSA as the standard;

### Source:

Rabbit

### Isotype:

IgG

### Immunogen Catalog Number:

AG30233

### GenBank Accession Number:

BC016868

### GeneID (NCBI):

90952

### UNIPROT ID:

Q96AP7

### Full Name:

endothelial cell adhesion molecule

### Calculated MW:

390 aa, 41 kDa

### Observed MW:

58 kDa

### Purification Method:

Antigen affinity purification

### Recommended Dilutions:

WB 1:500-1:2000

## Applications

### Tested Applications:

WB, ELISA

### Species Specificity:

Human, Mouse, Rat

### Positive Controls:

WB : mouse liver tissue, rat liver tissue

## Storage

### Storage:

Store at -20°C. Stable for one year after shipment.

### Storage Buffer:

PBS with 0.02% sodium azide and 50% glycerol pH 7.3.

Aliquoting is unnecessary for -20°C storage

\*\*\* 20ul sizes contain 0.1% BSA

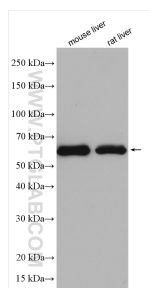
For technical support and original validation data for this product please contact:

T: 1 (888) 4PTGLAB (1-888-478-4522) (toll free in USA), or 1(312) 455-8498 (outside USA)

E: [proteintech@ptglab.com](mailto:proteintech@ptglab.com)  
W: [ptglab.com](http://ptglab.com)

This product is exclusively available under Proteintech Group brand and is not available to purchase from any other manufacturer.

## Selected Validation Data



Various lysates were subjected to SDS PAGE followed by western blot with 28739-1-AP (ESAM antibody) at dilution of 1:1000 incubated at room temperature for 1.5 hours.