

For Research Use Only

# WIPI2 Polyclonal antibody

Catalog Number: 28820-1-AP

5 Publications



## Basic Information

<b>Catalog Number:</b> 28820-1-AP	<b>GenBank Accession Number:</b> BC004116	<b>Purification Method:</b> Antigen affinity purification
<b>Size:</b> 150ul , Concentration: 650 ug/ml by Nanodrop;	<b>GeneID (NCBI):</b> 26100	<b>Recommended Dilutions:</b> WB 1:2000-1:16000
<b>Source:</b> Rabbit	<b>UNIPROT ID:</b> Q9Y4P8	<b>IHC 1:250-1:1000</b>
<b>Isotype:</b> IgG	<b>Full Name:</b> WD repeat domain, phosphoinositide interacting 2	<b>IF/ICC 1:200-1:800</b>
<b>Immunogen Catalog Number:</b> AG30505	<b>Calculated MW:</b> 49 kDa	
	<b>Observed MW:</b> 49 kDa	

## Applications

<b>Tested Applications:</b> WB, IHC, IF/ICC, ELISA	<b>Positive Controls:</b>
<b>Cited Applications:</b> WB, IF	<b>WB :</b> HeLa cells, RAW 264.7 cells
<b>Species Specificity:</b> Human, mouse	<b>IHC :</b> human heart tissue, mouse testis tissue
<b>Cited Species:</b> human, mouse, rat	<b>IF/ICC :</b> HeLa cells,
<b>Note-IHC: suggested antigen retrieval with TE buffer pH 9.0; (*) Alternatively, antigen retrieval may be performed with citrate buffer pH 6.0</b>	

## Background Information

WIPI2, the mammalian homologue of the yeast ATG18 gene, plays a key role in autophagy. It binds the omegasome, a phosphatidylinositol 3-phosphate (PI3P) rich domain of the endoplasmic reticulum from which the mature autophagosome develops. Western blotting detected a 49 kDa WIPI2 band.(PMID: 30968111, PMID: 30403914)

## Notable Publications

Author	Pubmed ID	Journal	Application
Carlos Ayala Torres	39723606	Autophagy	IF
Jiaming Nie	39361436	Adv Sci (Weinh)	IF
Peiran Feng	39117783	Cell Death Differ	WB

## Storage

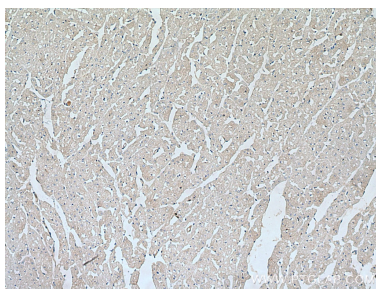
**Storage:**  
Store at -20°C. Stable for one year after shipment.  
**Storage Buffer:**  
PBS with 0.02% sodium azide and 50% glycerol pH 7.3.  
Aliquoting is unnecessary for -20°C storage

\*\*\* 20ul sizes contain 0.1% BSA

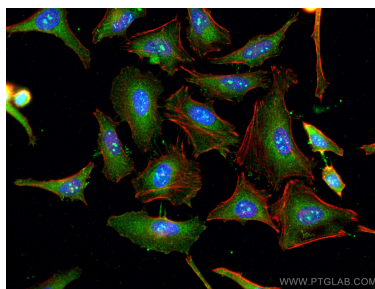
For technical support and original validation data for this product please contact:  
T: 1 (888) 4PTGLAB (1-888-478-4522) (toll free in USA), or 1(312) 455-8498 (outside USA)  
E: [proteintech@ptglab.com](mailto:proteintech@ptglab.com)  
W: [ptglab.com](http://ptglab.com)

This product is exclusively available under Proteintech Group brand and is not available to purchase from any other manufacturer.

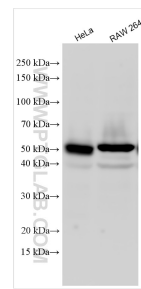
## Selected Validation Data



Immunohistochemical analysis of paraffin-embedded human heart tissue slide using 28820-1-AP (WIP12 antibody) at dilution of 1:500 (under 10x lens). Heat mediated antigen retrieval with Tris-EDTA buffer (pH 9.0).



Immunofluorescent analysis of (-20°C Ethanol) fixed HeLa cells using WIP12 antibody (28820-1-AP) at dilution of 1:400 and CoraLite® 488-Conjugated Goat Anti-Rabbit IgG(H+L), CL594-phalloidin (red).



Various lysates were subjected to SDS PAGE followed by western blot with 28820-1-AP (WIP12 antibody) at dilution of 1:8000 incubated at room temperature for 1.5 hours.