

For Research Use Only

PCOLCE Polyclonal antibody

Catalog Number: 28826-1-AP



Basic Information

Catalog Number:

28826-1-AP

Size:

150ul, Concentration: 750 ug/ml by Nanodrop;

Source:

Rabbit

Isotype:

IgG

Immunogen Catalog Number:

AG29719

GenBank Accession Number:

BC000574

GeneID (NCBI):

5118

UNIPROT ID:

Q15113

Full Name:

procollagen C-endopeptidase enhancer

Calculated MW:

48 kDa

Observed MW:

48-50 kDa

Purification Method:

Antigen affinity purification

Recommended Dilutions:

WB 1:500-1:3000

Applications

Tested Applications:

WB, ELISA

Species Specificity:

Human

Positive Controls:

WB : human plasma,

Background Information

PCOLCE (Procollagen C-endopeptidase enhancer 1), also named as PCPE1, is a secreted glycoprotein that functions as a positive regulator of procollagen processing. The calculated molecular weight of PCOLCE is 48 kDa. PCOLCE binds to the C-terminal propeptide of type I procollagen and enhances procollagen C-proteinase activity. Procollagen C-proteinases have important roles in developmental processes and assembly of the extracellular matrix. It has been reported that the dysregulation of PCOLCE is involved in numerous diseases. For instance, the expression of PCOLCE positively correlates with muscle and liver fibrosis (PMID: 27458976). And PCOLCE was highly expressed in osteosarcoma and may play an important role in promoting the lung metastasis of osteosarcoma (PMID: 31285765).

Storage

Storage:

Store at -20°C. Stable for one year after shipment.

Storage Buffer:

PBS with 0.02% sodium azide and 50% glycerol pH 7.3.

Aliquoting is unnecessary for -20°C storage

*** 20ul sizes contain 0.1% BSA

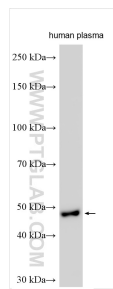
For technical support and original validation data for this product please contact:

T: 1 (888) 4PTGLAB (1-888-478-4522) (toll free in USA), or 1(312) 455-8498 (outside USA)

E: proteintech@ptglab.com
W: ptglab.com

This product is exclusively available under Proteintech Group brand and is not available to purchase from any other manufacturer.

Selected Validation Data



Various lysates were subjected to SDS PAGE followed by western blot with 28826-1-AP (PCOLCE antibody) at dilution of 1:1500 incubated at room temperature for 1.5 hours.