

For Research Use Only

# Phospho-Beta Catenin (Ser675) Polyclonal antibody

Catalog Number: 28853-1-AP

12 Publications



## Basic Information

### Catalog Number:

28853-1-AP

### Size:

100ul, Concentration: 450 ug/ml by Nanodrop;

### Source:

Rabbit

### Isotype:

IgG

### GenBank Accession Number:

BC058926

### GeneID (NCBI):

1499

### ENSEMBL Gene ID:

ENSG00000168036

### UNIPROT ID:

P35222

### Full Name:

catenin (cadherin-associated protein), beta 1, 88kDa

### Calculated MW:

781 aa, 86 kDa

### Observed MW:

90-100 kDa

### Purification Method:

Protein A purification

### Recommended Dilutions:

WB 1:500-1:3000

IF/ICC 1:200-1:800

## Applications

### Tested Applications:

WB, IF/ICC, ELISA

### Cited Applications:

WB, IHC, IF

### Species Specificity:

Human

### Cited Species:

human, mouse, rat, bovine

### Positive Controls:

WB : λ phosphatase treated HT-29 cells,

IF/ICC : λ phosphatase treated MCF-7 cells,

## Background Information

Beta Catenin, also known as CTNNB1, is an evolutionarily conserved, multifunctional intracellular protein. Beta catenin is a core component of the cadherin protein complex, whose stabilization is essential for the activation of Wnt/β-catenin signaling. Phosphorylation of Ser675 in the C-terminus of at beta catenin promotes nuclear accumulation and transcriptional activity, resulting in increased activation of the Wnt/β-catenin signaling pathway (PMID: 25980439). In addition, Ser675 phosphorylation promotes beta catenin interaction with the transcriptional coactivator CREB-binding protein in the nucleus (PMID: 16476742).

## Notable Publications

Author	Pubmed ID	Journal	Application
Pu Huang	35813315	Ann Transl Med	WB
Yuxuan Wang	39645067	Bone	WB
Lu-Ping Wen	39164214	Am J Chin Med	WB, IHC

## Storage

### Storage:

Store at -20°C. Stable for one year after shipment.

### Storage Buffer:

PBS with 0.02% sodium azide and 50% glycerol pH 7.3.

Aliquoting is unnecessary for -20°C storage

\*\*\* 20ul sizes contain 0.1% BSA

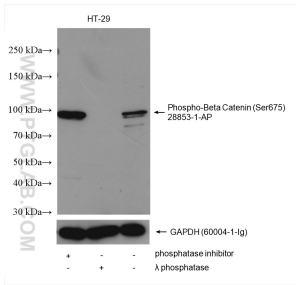
For technical support and original validation data for this product please contact:

T: 1 (888) 4PTGLAB (1-888-478-4522) (toll free in USA), or 1(312) 455-8498 (outside USA)

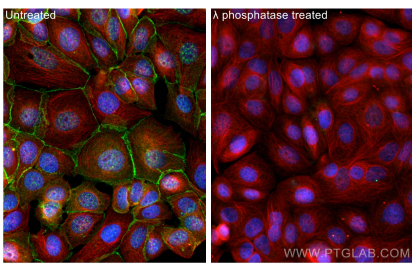
E: proteintech@ptglab.com  
W: ptglab.com

This product is exclusively available under Proteintech Group brand and is not available to purchase from any other manufacturer.

## Selected Validation Data



Non-treated HT-29 cells, phosphatase inhibitor and  $\lambda$  phosphatase treated HT-29 cells were subjected to SDS PAGE followed by western blot with 28853-1-AP (Phospho-Beta Catenin (Ser675) antibody) at dilution of 1:1500 incubated at room temperature for 1.5 hours. The membrane was stripped and re-blotted with GAPDH antibody as loading control.



Immunofluorescent analysis of (4% PFA) fixed  $\lambda$  phosphatase treated MCF-7 cells using Phospho-Beta Catenin (Ser675) antibody (28853-1-AP) at dilution of 1:400 and CoraLite® 488-Conjugated Goat Anti-Rabbit IgG(H+L), Alpha Tubulin antibody (66031-1-Ig, Clone: 1E4C11, red).