

For Research Use Only

Phospho-SMAD1 (Ser214) Polyclonal antibody



Catalog Number: 28895-1-AP

1 Publications

Basic Information

Catalog Number: 28895-1-AP	GenBank Accession Number: BC001878	Purification Method: Antigen affinity purification
Size: 100ul , Concentration: 450 µg/ml by Nanodrop;	GeneID (NCBI): 4086	Recommended Dilutions: WB 1:2000-1:16000
Source: Rabbit	Full Name: SMAD family member 1	
Isotype: IgG	Calculated MW: 52 kDa	
	Observed MW: 52 kDa	

Applications

Tested Applications: WB, ELISA	Positive Controls: WB : BMP2 treated HepG2 cells,
Cited Applications: WB	
Species Specificity: Human	
Cited Species: mouse	

Background Information

SMAD family member 1 (Smad1) have been involved in metastatic progression of many cancer types. Smad1 can be induced by many tumor-stimulating cytokines such as the bone morphogenetic protein 2 (BMP2) and TNF α and plays important roles in cell invasion and metastasis. BMP2 signalling is initiated by binding to its specific receptors, which leads to in the phosphorylation and nuclear translocation of Smad1. Translocated Smad1 then modulates the expression of downstream osteogenic genes. (PMID: 32954678, PMID: 30008908)

Notable Publications

Author	Pubmed ID	Journal	Application
Tianyu Li	34823766	Carbohydr Polym	WB

Storage

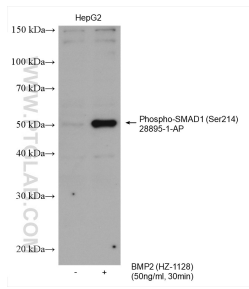
Storage:
Store at -20°C. Stable for one year after shipment.
Storage Buffer:
PBS with 0.02% sodium azide and 50% glycerol pH 7.3.
Aliquoting is unnecessary for -20°C storage

*** 20ul sizes contain 0.1% BSA

For technical support and original validation data for this product please contact:
T: 1 (888) 4PTGLAB (1-888-478-4522) (toll free in USA), or 1(312) 455-8498 (outside USA)
E: proteintech@ptglab.com
W: ptglab.com

This product is exclusively available under Proteintech Group brand and is not available to purchase from any other manufacturer.

Selected Validation Data



Non-treated HepG2 and BMP2 (HZ-1128) treated HepG2 cells were subjected to SDS PAGE followed by western blot with 28895-1-AP (Phospho-SMAD1 (Ser214) antibody) at dilution of 1:8000 incubated at room temperature for 1 hours.