

For Research Use Only

PLA2G4A Polyclonal antibody

Catalog Number: 28924-1-AP

1 Publications



Basic Information

Catalog Number:

28924-1-AP

Size:

150ul , Concentration: 750 ug/ml by Nanodrop;

Source:

Rabbit

Isotype:

IgG

GenBank Accession Number:

BC114340

GeneID (NCBI):

5321

UNIPROT ID:

P47712

Full Name:

phospholipase A2, group IVA (cytosolic, calcium-dependent)

Calculated MW:

749 aa, 85 kDa

Observed MW:

100 kDa

Purification Method:

Antigen affinity purification

Recommended Dilutions:

WB 1:1000-1:4000

IHC 1:50-1:500

Applications

Tested Applications:

WB, IHC, ELISA

Cited Applications:

WB

Species Specificity:

Human

Cited Species:

human

Positive Controls:

WB : HeLa cells,

IHC : human colon cancer tissue,

Note-IHC: suggested antigen retrieval with TE buffer pH 9.0; (*) Alternatively, antigen retrieval may be performed with citrate buffer pH 6.0

Background Information

PLA2G4A, also named cPLA2 (cytosolic phospholipase A2), is a highly conserved and widely expressed enzyme that can promote lipid mediator production. It is present in the cytosol of resting cells and upon activation by a variety of agonists, undergoes Ca⁺⁺-directed translocation to perinuclear membranes. PLA2G4A plays a major role in membrane lipid remodeling and biosynthesis of lipid mediators of the inflammatory response. It has been reported that the activity and expression levels of PLA2G4A are upregulated in several neurodegenerative diseases. It is a 749 amino acid, 85 kDa protein that migrates at 100-112 kDa in polyacrylamide gels (PMID: 17459165).

Notable Publications

Author	Pubmed ID	Journal	Application
Anthony Nelligan	39413208	Nucleic Acids Res	WB

Storage

Storage:

Store at -20°C. Stable for one year after shipment.

Storage Buffer:

PBS with 0.02% sodium azide and 50% glycerol pH 7.3.

Aliquoting is unnecessary for -20°C storage

*** 20ul sizes contain 0.1% BSA

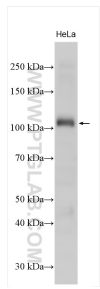
For technical support and original validation data for this product please contact:

T: 1 (888) 4PTGLAB (1-888-478-4522) (toll free in USA), or 1(312) 455-8498 (outside USA)

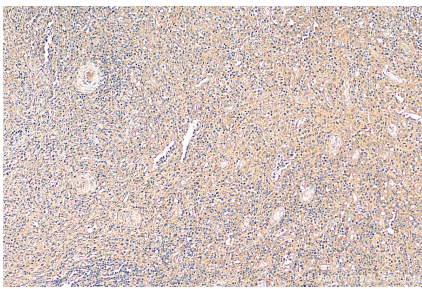
E: proteintech@ptglab.com
W: ptglab.com

This product is exclusively available under Proteintech Group brand and is not available to purchase from any other manufacturer.

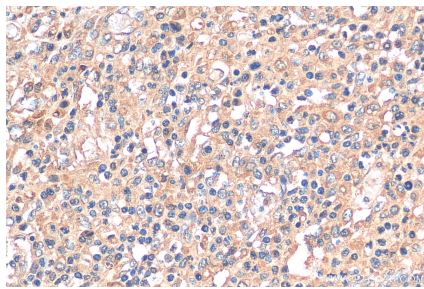
Selected Validation Data



HeLa cells were subjected to SDS PAGE followed by western blot with 28924-1-AP (PLA2G4A antibody) at dilution of 1:2000 incubated at room temperature for 1.5 hours.



Immunohistochemical analysis of paraffin-embedded human colon cancer tissue slide using 28924-1-AP (PLA2G4A antibody) at dilution of 1:200 (under 10x lens). Heat mediated antigen retrieval with Tris-EDTA buffer (pH 9.0).



Immunohistochemical analysis of paraffin-embedded human colon cancer tissue slide using 28924-1-AP (PLA2G4A antibody) at dilution of 1:200 (under 40x lens). Heat mediated antigen retrieval with Tris-EDTA buffer (pH 9.0).