

For Research Use Only

Phospho-PLA2G4A (Ser505) Polyclonal antibody



Catalog Number: 28925-1-AP

Basic Information

Catalog Number: 28925-1-AP	GenBank Accession Number: BC114340	Purification Method: Antigen affinity purification
Size: 100ul , Concentration: 200 µg/ml by Nanodrop;	GeneID (NCBI): 5321	Recommended Dilutions: WB 1:1000-1:6000 IF 1:200-1:800
Source: Rabbit	UNIPROT ID: P47712	
Isotype: IgG	Full Name: phospholipase A2, group IVA (cytosolic, calcium-dependent)	
	Calculated MW: 749 aa, 85 kDa	
	Observed MW: 100-110 kDa	

Applications

Tested Applications: WB, IF, ELISA	Positive Controls:
Species Specificity: Human	WB: λ phosphatase treated HeLa cells, IF: λ phosphatase treated HeLa cells,

Background Information

PLA2G4A, also named as cPLA2 (cytosolic phospholipase A2), is a highly conserved and widely expressed enzyme which can promote lipid mediator production. PLA2G4A plays a major role in membrane lipid remodeling and biosynthesis of lipid mediators of the inflammatory response. It has been reported that the activity and expression levels of PLA2G4A are upregulated in several neurodegenerative diseases. PLA2G4A can be activated at the phosphorylation site of ser505 by MAP kinase. (PMID: 25838312, 8381049, 31238788)

Storage

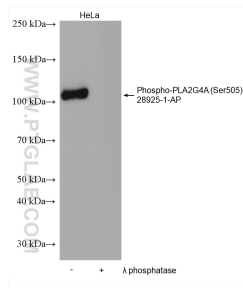
Storage:
Store at -20°C. Stable for one year after shipment.
Storage Buffer:
PBS with 0.02% sodium azide, 50% glycerol pH 7.3 and 0.05%BSA.
Aliquoting is unnecessary for -20°C storage

*** 20ul sizes contain 0.1% BSA

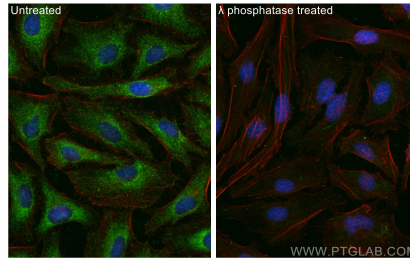
For technical support and original validation data for this product please contact:
T: 1 (888) 4PTGLAB (1-888-478-4522) (toll free in USA), or 1(312) 455-8498 (outside USA)
E: proteintech@ptglab.com
W: ptglab.com

This product is exclusively available under Proteintech Group brand and is not available to purchase from any other manufacturer.

Selected Validation Data



Non-treated HeLa and λ phosphatase treated HeLa cells were subjected to SDS PAGE followed by western blot with 28925-1-AP (Phospho-PLA2G4A (Ser505) antibody) at dilution of 1:3000 incubated at 4°C overnight.



Immunofluorescent analysis of (-20°C Ethanol) fixed λ phosphatase treated HeLa cells using Phospho-PLA2G4A (Ser505) antibody (28925-1-AP) at dilution of 1:400 and CoraLite® 488-Conjugated AffiniPure Goat Anti-Rabbit IgG(H+L) (SA00013-2), CL594-Phalloidin (red).