

For Research Use Only

Phospho-PKC Alpha (Ser657) Polyclonal antibody



Catalog Number: 28926-1-AP

3 Publications

Basic Information

Catalog Number:

28926-1-AP

Size:

100ul, Concentration: 260 ug/ml by Nanodrop;

Source:

Rabbit

Isotype:

IgG

GenBank Accession Number:

AK055431

GeneID (NCBI):

5578

UNIPROT ID:

P17252

Full Name:

protein kinase C, alpha

Calculated MW:

77 kDa

Observed MW:

77 kDa

Purification Method:

Antigen affinity purification

Recommended Dilutions:

WB 1:500-1:3000

IF/ICC 1:200-1:800

Applications

Tested Applications:

WB, IF/ICC, ELISA

Cited Applications:

WB

Species Specificity:

Human

Cited Species:

human, mouse

Positive Controls:

WB : Calyculin A treated PC-3 cells,

IF/ICC : λ phosphatase treated HeLa cells,

Background Information

PKCs are a family of serine/threonine kinases involved in various processes in cells including proliferation, differentiation, cell survival, and apoptosis. PKC family is composed of three different subgroups: conventional (cPKC), the novel (nPKC) and atypical (aPKC). PKC α , β 1, β 2, and γ belong to cPKC, PKC δ , ϵ , η and θ are nPKC, whereas aPKC comprises of PKC ζ and λ /i. All PKCs consist of the N-terminal regulatory region and C-terminal catalytic region (kinase domain). PKCs are physiologically activated by various extracellular signals transduced by hormones, growth factors, cytokines or antigens. The presence of activated PKCs on internal membranes leads to the phosphorylation of various interacting proteins. (PMID: 32466765, PMID: 12417016)

Notable Publications

Author	Pubmed ID	Journal	Application
Zhengwei Zhang	39066845	Apoptosis	WB
Lichao Zhu	38158489	Appl Biochem Biotechnol	WB
Xiao-Wei Zhang	37385990	Cell Death Dis	WB

Storage

Storage:

Store at -20°C. Stable for one year after shipment.

Storage Buffer:

PBS with 0.02% sodium azide and 50% glycerol pH 7.3.

Aliquoting is unnecessary for -20°C storage

*** 20ul sizes contain 0.1% BSA

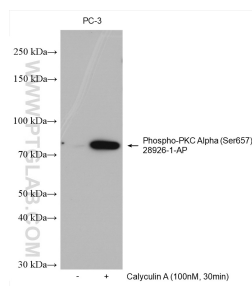
For technical support and original validation data for this product please contact:

T: 1 (888) 4PTGLAB (1-888-478-4522) (toll free in USA), or 1(312) 455-8498 (outside USA)

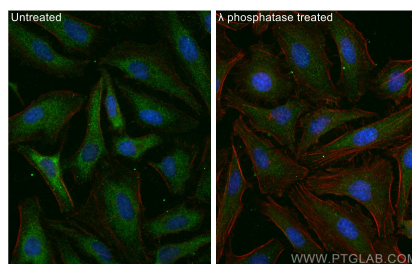
E: proteintech@ptglab.com
W: ptglab.com

This product is exclusively available under Proteintech Group brand and is not available to purchase from any other manufacturer.

Selected Validation Data



Non-treated and Calyculin A treated PC-3 cells were subjected to SDS PAGE followed by western blot with 28926-1-AP (Phospho-PKC Alpha (Ser657) antibody) at dilution of 1:1500 incubated at room temperature for 1 hours.



Immunofluorescent analysis of (-20°C Ethanol) fixed λ phosphatase treated HeLa cells using Phospho-PKC Alpha (Ser657) antibody (28926-1-AP) at dilution of 1:400 and CoraLite® 488-Conjugated AffiniPure Goat Anti-Rabbit IgG(H+L) (SA00013-2), CL594-Phalloidin (red).