

For Research Use Only

# Phospho-STAT1 (Ser727) Polyclonal antibody



Catalog Number: 28977-1-AP

3 Publications

## Basic Information

<b>Catalog Number:</b> 28977-1-AP	<b>GenBank Accession Number:</b> BC002704	<b>Purification Method:</b> Antigen affinity purification
<b>Size:</b> 100ul , Concentration: 350 µg/ml by Nanodrop;	<b>GeneID (NCBI):</b> 6772	<b>Recommended Dilutions:</b> WB 1:500-1:2000 IF 1:200-1:800
<b>Source:</b> Rabbit	<b>Full Name:</b> signal transducer and activator of transcription 1, 91kDa	
<b>Isotype:</b> IgG	<b>Calculated MW:</b> 83 kDa	
	<b>Observed MW:</b> 84 kDa	

## Applications

<b>Tested Applications:</b> IF, WB, ELISA	<b>Positive Controls:</b> WB : IFN gamma treated HeLa cells, IF : IFN alpha treated HeLa cells,
<b>Cited Applications:</b> WB	
<b>Species Specificity:</b> Human	
<b>Cited Species:</b> human, mouse	

## Background Information

STAT1 (signal transducers and activators of transcription 1) is a member of the STAT protein family. STAT family members are phosphorylated by the receptor associated kinases, and then form homo- or heterodimers that translocate to the cell nucleus where they act as transcription activators. STAT1 activating phosphorylation at Ser727 is p38-dependant during lipotoxic stress. MLK3 activation triggers a MAPK signaling cascade resulting in STAT1 Ser727 phosphorylation. The phosphorylation of STAT1 Ser727 increases its nuclear localization, and transcriptional activity. (PMID: 28262979).

## Notable Publications

Author	Pubmed ID	Journal	Application
Emma Saulters	38147007	Cancer Res Commun	WB
Yutong Cui	38134680	J Reprod Immunol	WB
Wei Fan	37790522	Res Sq	WB

## Storage

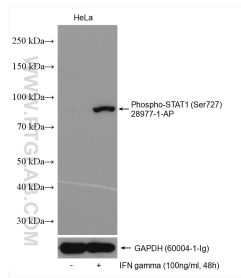
**Storage:**  
Store at -20°C. Stable for one year after shipment.  
**Storage Buffer:**  
PBS with 0.02% sodium azide and 50% glycerol pH 7.3.  
Aliquoting is unnecessary for -20°C storage

\*\*\* 20ul sizes contain 0.1% BSA

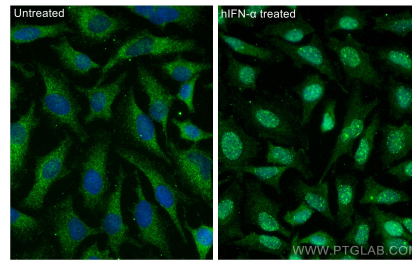
For technical support and original validation data for this product please contact:  
T: 1 (888) 4PTGLAB (1-888-478-4522) (toll free in USA), or 1(312) 455-8498 (outside USA)  
E: proteintech@ptglab.com  
W: ptglab.com

This product is exclusively available under Proteintech Group brand and is not available to purchase from any other manufacturer.

## Selected Validation Data



Non-treated HeLa cells and IFN gamma treated HeLa cells were subjected to SDS PAGE followed by western blot with 28977-1-AP (Phospho-STAT1 (Ser727) antibody) at dilution of 1:1000 incubated at room temperature for 1.5 hours. The membrane was stripped and re-blotted with GAPDH antibody as loading control.



Immunofluorescent analysis of (-20°C Ethanol) fixed IFN alpha treated HeLa cells using Phospho-STAT1 (Ser727) antibody (28977-1-AP) at dilution of 1:400 and CoraLite®488-Conjugated AffiniPure Goat Anti-Rabbit IgG(H+L).