

For Research Use Only

# APAF1 Polyclonal antibody

Catalog Number: 29022-1-AP

2 Publications



## Basic Information

Catalog Number:

29022-1-AP

Size:

150ul, Concentration: 500 ug/ml by Nanodrop;

Source:

Rabbit

Isotype:

IgG

Immunogen Catalog Number:

AG30606

GenBank Accession Number:

BC136532

GeneID (NCBI):

317

UNIPROT ID:

O14727

Full Name:

apoptotic peptidase activating factor 1

Calculated MW:

1248 aa, 142 kDa

Observed MW:

130-140 kDa

Purification Method:

Antigen affinity purification

Recommended Dilutions:

WB 1:1000-1:6000

## Applications

Tested Applications:

WB, ELISA

Cited Applications:

WB

Species Specificity:

Human

Cited Species:

human, rat

Positive Controls:

WB: COLO 320 cells,

## Background Information

APAF1, also named as Apoptotic protease-activating factor 1 or KIAA0413, is a 1248 amino acid protein, which contains one CARD domain, contains one NB-ARC domain and Contains fifteen WD repeats. APAF1 localizes in the cytoplasm and is widely expressed in many tissues. Highest levels of expression is in adult spleen, peripheral blood leukocytes, in fetal brain, kidney and lung. Oligomeric APAF1 mediates the cytochrome c-dependent autocatalytic activation of pro-caspase-9 (Apaf-3), leading to the activation of caspase-3 and apoptosis.

## Notable Publications

Author	Pubmed ID	Journal	Application
Yujie Zhong	36501024	Nutrients	WB
Yulun Wu	38724006	J Adv Res	WB

## Storage

Storage:

Store at -20°C.

Storage Buffer:

PBS with 0.02% sodium azide and 50% glycerol pH 7.3.

Aliquoting is unnecessary for -20°C storage

\*\*\* 20ul sizes contain 0.1% BSA

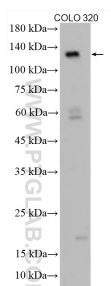
For technical support and original validation data for this product please contact:

T: 1 (888) 4PTGLAB (1-888-478-4522) (toll free in USA), or 1(312) 455-8498 (outside USA)

E: [proteintech@ptglab.com](mailto:proteintech@ptglab.com)  
W: [ptglab.com](http://ptglab.com)

This product is exclusively available under Proteintech Group brand and is not available to purchase from any other manufacturer.

## Selected Validation Data



COLO 320 cells were subjected to SDS PAGE followed by western blot with 29022-1-AP (APAF1 antibody) at dilution of 1:3000 incubated at room temperature for 1.5 hours.